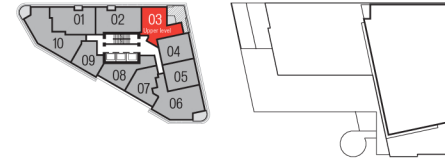
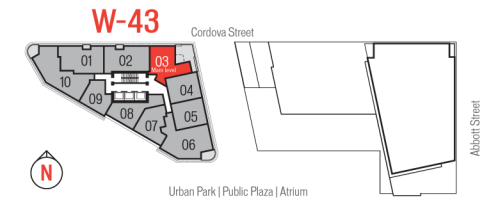


www.



FLOORS 16, 37



FLOORS 14, 35

W

PLAN
NE SKY BALCONY

TOWER W43

2 BEDROOM + FAMILY
2.5 BATH

1626 SF LIVING
348 SF DECK

SPECIFICATIONS:

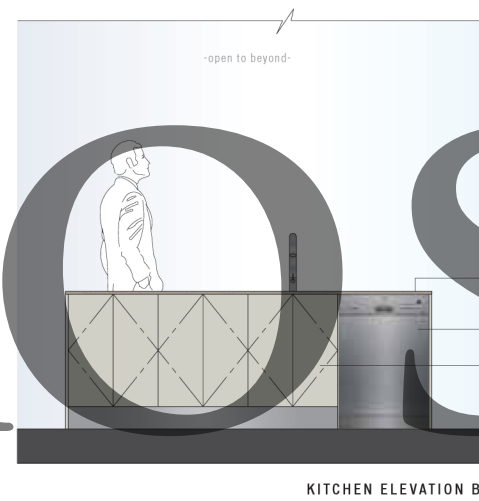
- Select from 10 custom designs for the suite entry door
- Exposed concrete, over-height ceilings
- Large sliding doors to bedrooms, allowing flex-space options, in most plans
- Contemporary oak parquet floors
- Optional integrated work spaces
- Polished stone kitchen countertops
- Glass feature wall tiles in a choice of five colours
- Most master baths include a separate shower and tub
- Dual flush toilet
- Large format porcelain floor and wall tiles in bathrooms
- Ensuite glass-tile feature wall, 5 colours to choose from
- Eggersmann kitchens, custom designed and finished for Woodward's
- Air-conditioning
- Appliance package includes:
 - AEG 24" cooktop (Stainless Steel)
 - AEG 24" oven (Stainless Steel)
 - AEG dishwasher (Stainless Steel)
 - AEG built-in coffee machine
 - Panasonic microwave/hoodfan (Stainless Steel)
 - Liebherr 24" refrigerator (Stainless Steel)
 - Samsung stacked washer/dryer
 - Garburator

DISCLAIMER:
In the interest of continuing improvement, the developer reserves the right to make modifications to the product design, pricing and specifications without notice. Square footages are approximate and may vary. E.&O.E.

KITCHEN ELEVATIONS

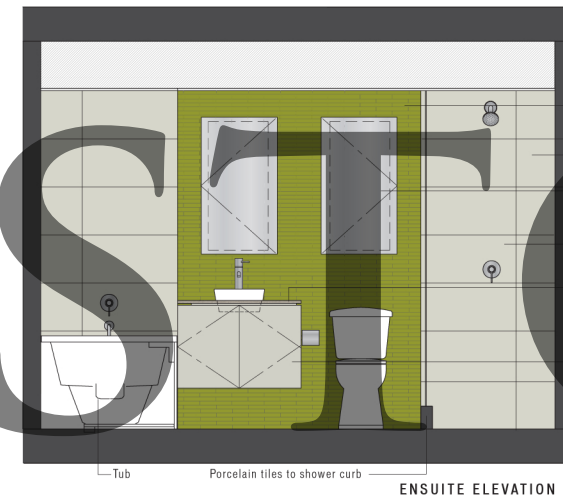


KITCHEN ELEVATION A

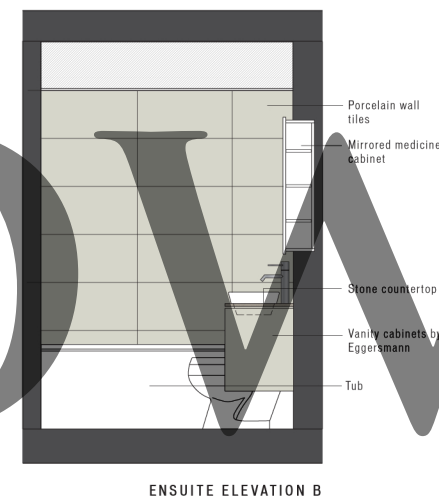


KITCHEN ELEVATION B

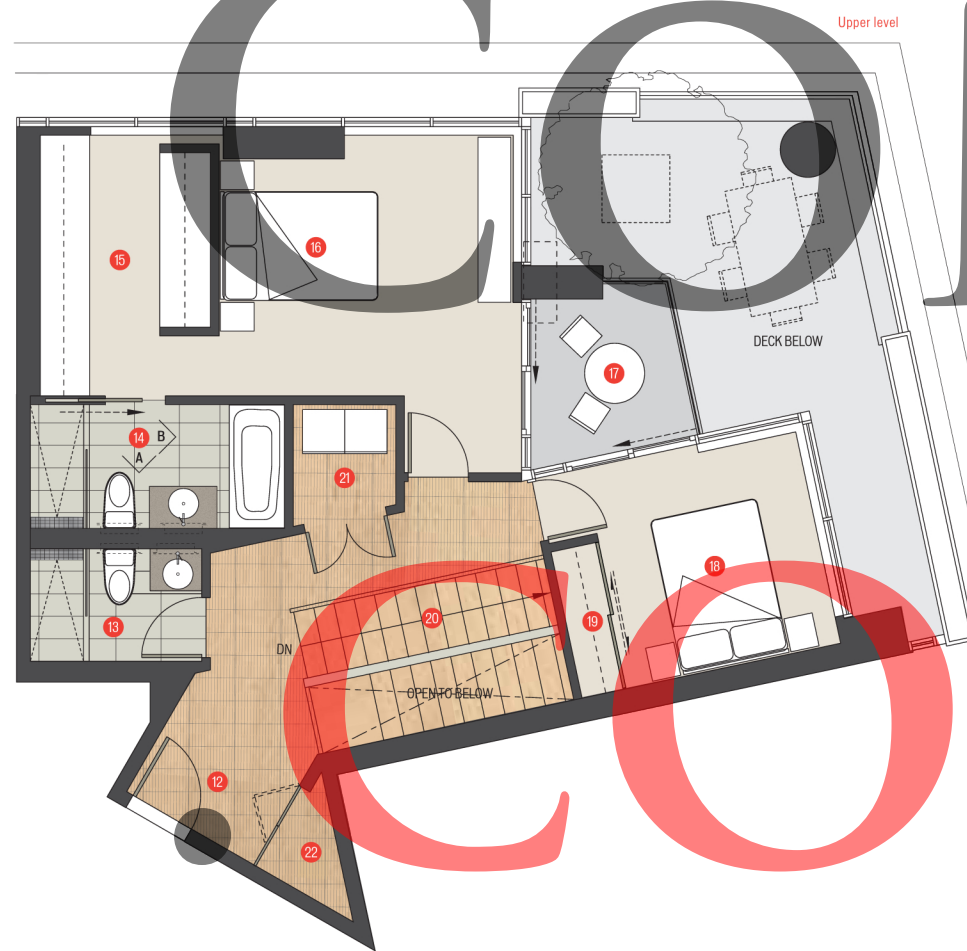
BATHROOM ELEVATIONS



ENSUITE ELEVATION A



ENSUITE ELEVATION B



- | Main level | Upper level |
|-----------------------------|---------------------|
| 1 Entry / Foyer (FL 14, 35) | 12 Exit (FL 16, 37) |
| 2 Coat Closet | 13 Bathroom-2 |
| 3 Kitchen | 14 Ensuite |
| 4 Dining | 15 Walk-in Closet |
| 5 Living | 16 Master Bedroom |
| 6 Deck | 17 Deck |
| 7 Family | 18 Bedroom-2 |
| 8 Powder Room | 19 Closet |
| 9 Office | 20 Stairs |
| 10 Stairs | 21 Laundry |
| 11 Storage | 22 Storage |

SCALE
0 1 2 3 5 10 FT

