



## PLAN PHB

### TOWER W32

2 BEDROOM + FAMILY + OFFICE  
2.5 BATH

2465 SF LIVING  
1561 SF DECK

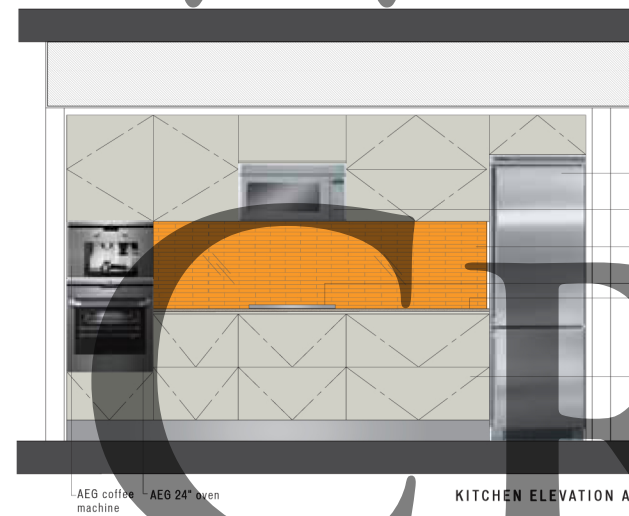
#### SPECIFICATIONS:

- Select from 10 custom designs for the suite entry door
- Exposed concrete, over-height ceilings
- Large sliding doors to bedrooms, allowing flex-space options, in most plans
- Contemporary oak parquet floors
- Optional integrated work spaces
- Polished stone kitchen countertops
- Glass feature wall tiles in a choice of five colours
- Most master baths include a separate shower and tub
- Dual flush toilet
- Large format porcelain floor and wall tiles in bathrooms
- Ensuite glass-tile feature wall, 5 colours to choose from
- Eggersmann kitchens, custom designed and finished for Woodward's
- Air-conditioning
- Appliance package includes:
  - AEG 24" cooktop (Stainless Steel)
  - AEG 24" oven (Stainless Steel)
  - AEG dishwasher (Stainless Steel)
  - AEG built-in coffee machine
  - Panasonic microwave/hoodfan (Stainless Steel)
  - Liebherr 24" refrigerator (Stainless Steel)
  - Samsung stacked washer/dryer
  - Garburator

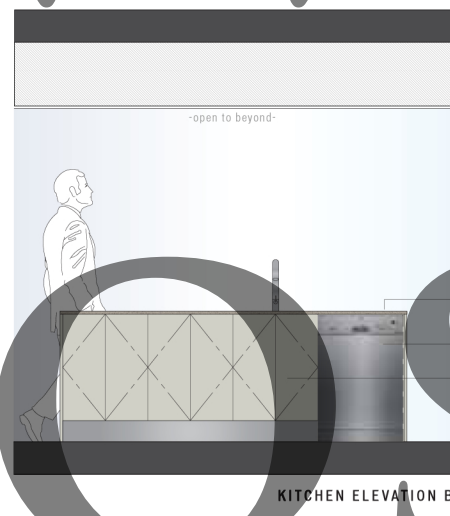
#### DISCLAIMER:

In the interest of continuing improvement, the developer reserves the right to make modifications to the product design, pricing and specifications without notice. Square footages are approximate and may vary. E.&O.E.

#### KITCHEN ELEVATIONS

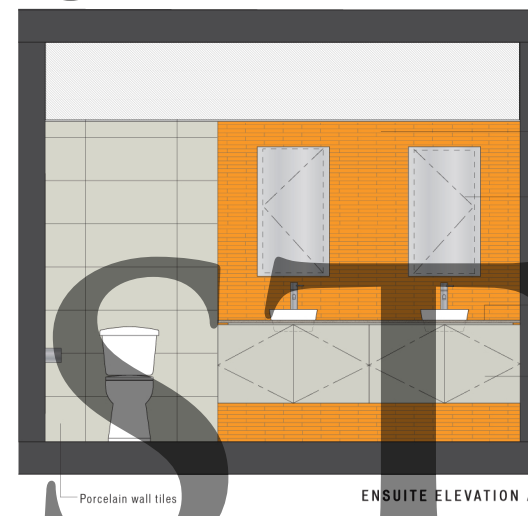


KITCHEN ELEVATION A

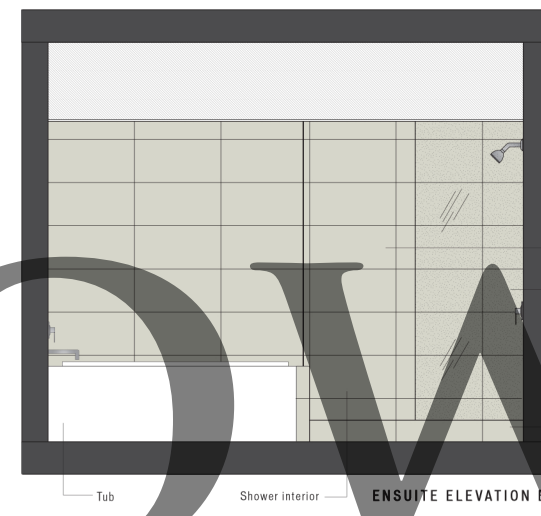


KITCHEN ELEVATION B

#### BATHROOM ELEVATIONS



ENSUITE ELEVATION A



ENSUITE ELEVATION B

