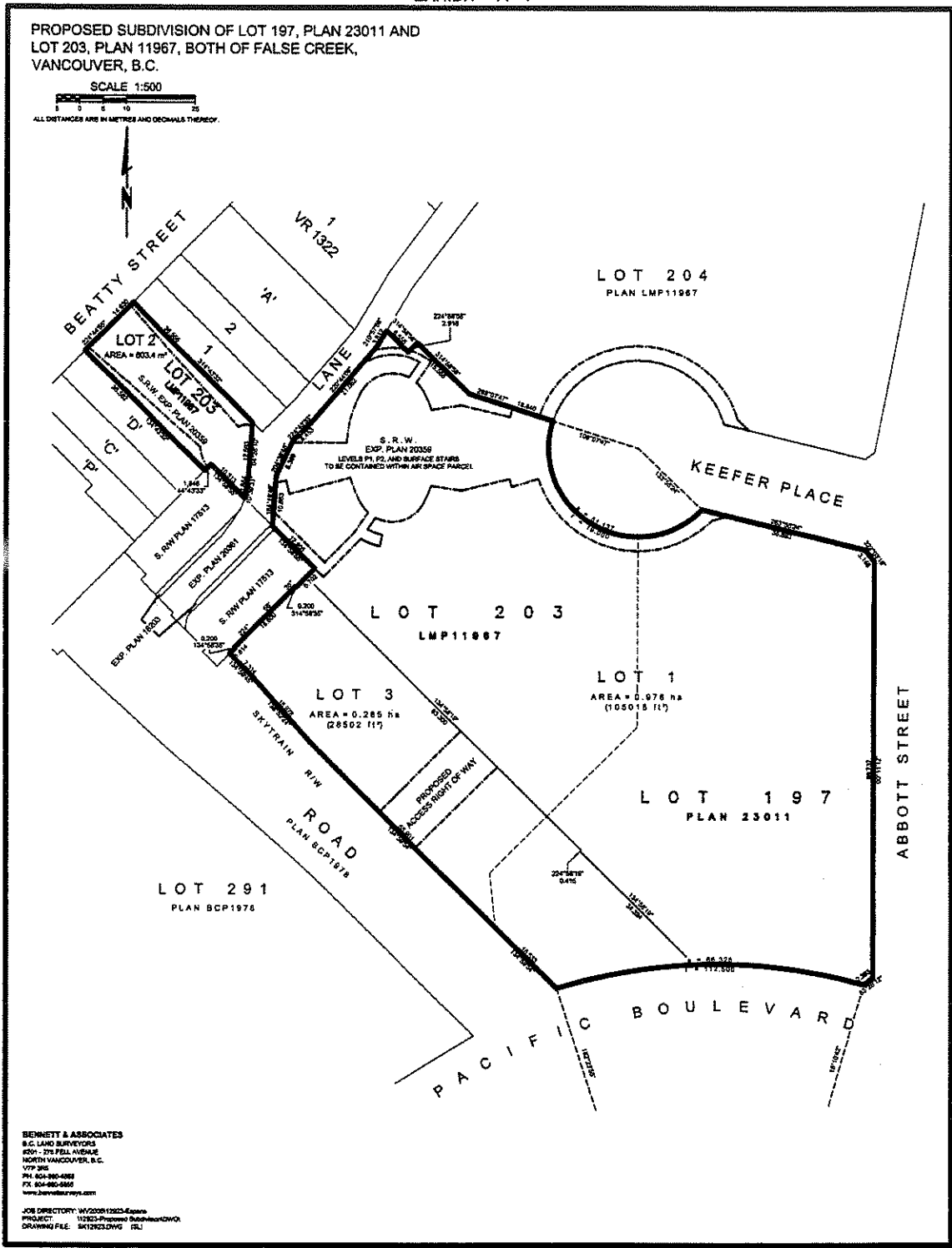


EXHIBIT "A-1"

PROPOSED SUBDIVISION OF LOT 197, PLAN 23011 AND  
 LOT 203, PLAN 11967, BOTH OF FALSE CREEK,  
 VANCOUVER, B.C.

SCALE 1:500  
 ALL DISTANCES ARE IN METRES AND DECIMALS THEREOF.

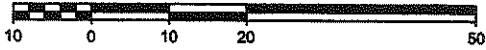


**BENNETT & ASSOCIATES**  
 B.C. LAND SURVEYORS  
 8201 - 375 FELL AVENUE  
 NORTH VANCOUVER, B.C.  
 V7V 3K5  
 PH: 604-260-4888  
 FX: 604-460-8860  
 www.bennettsurveyors.com

JOB DIRECTORY: V1220912023-Exhibit  
 PROJECT: 11223-Proposed Subdivision  
 DRAWING FILE: SK1262L0WG (SL)

# PRELIMINARY STRATA PLAN OF PROPOSED LOT 1, FALSE CREEK, BCP

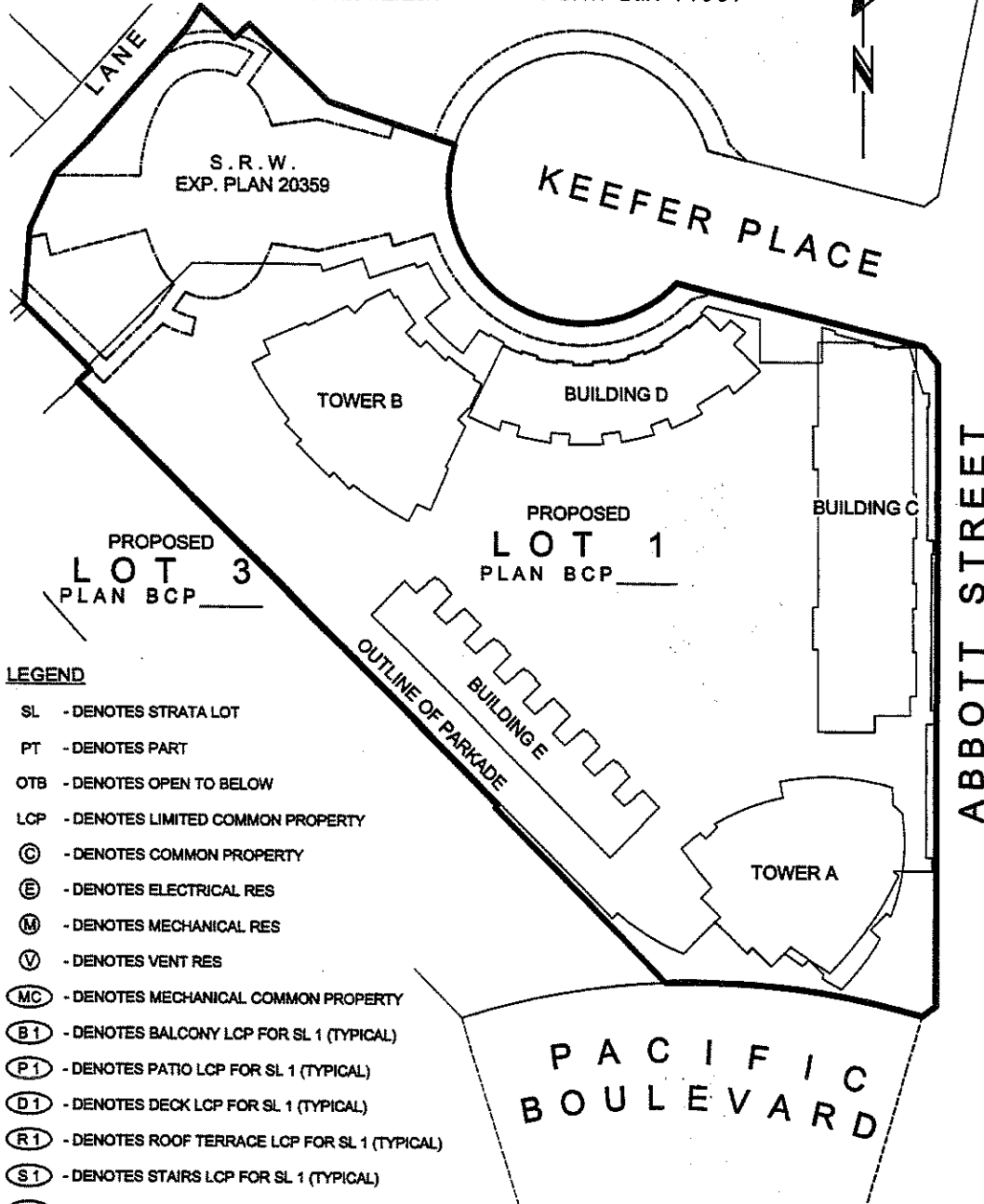
SCALE 1:750



ALL DISTANCES ARE IN METRES AND DECIMALS THEREOF.

LOT 204

PLAN LMP11967



**LEGEND**

- SL - DENOTES STRATA LOT
- PT - DENOTES PART
- OTB - DENOTES OPEN TO BELOW
- LCP - DENOTES LIMITED COMMON PROPERTY
- Ⓢ - DENOTES COMMON PROPERTY
- Ⓔ - DENOTES ELECTRICAL RES
- Ⓜ - DENOTES MECHANICAL RES
- Ⓥ - DENOTES VENT RES
- ⓂⒸ - DENOTES MECHANICAL COMMON PROPERTY
- Ⓟ1 - DENOTES BALCONY LCP FOR SL 1 (TYPICAL)
- Ⓟ1 - DENOTES PATIO LCP FOR SL 1 (TYPICAL)
- Ⓟ1 - DENOTES DECK LCP FOR SL 1 (TYPICAL)
- Ⓟ1 - DENOTES ROOF TERRACE LCP FOR SL 1 (TYPICAL)
- Ⓟ1 - DENOTES STAIRS LCP FOR SL 1 (TYPICAL)
- Ⓟ - DENOTES LCP FOR RESIDENTIAL STRATA LOTS, BEING SL 1 TO SL 446
- Ⓜ - DENOTES LCP FOR COMMERCIAL STRATA LOTS, BEING SL 447 TO SL 454

**BENNETT & ASSOCIATES**

B.C. LAND SURVEYORS  
 #201 - 275 FELL AVENUE  
 NORTH VANCOUVER, B.C.  
 V7P 3R5  
 PH. 604-980-4868  
 FX. 604-980-5856  
 www.bennettsurveys.com

- 4 SHEET 106
- 3 SHEETS 25, 27-28, 59-60, 93, 105
- 2 SHEETS 14-24, 26, 29-56, 59, 63, 65, 94-95, 100-102, 108
- 1 SHEETS 1-13, 64, 66-92, 96, 99, 103-104, 107
- 0 SHEETS 57-58, 61-62, 97-98

JOB DIRECTORY: \NW2006\12923-Espana  
 PROJECT: \12923-Preliminary Strata\DWG\1  
 DRAWING FILE: ST12923-07P.DWG (SL)

BASED ON ARCHITECTURAL PLANS (DIGITAL COPIES)  
 PROVIDED BY: IBI-HB  
 RECEIVED: Varying Dates

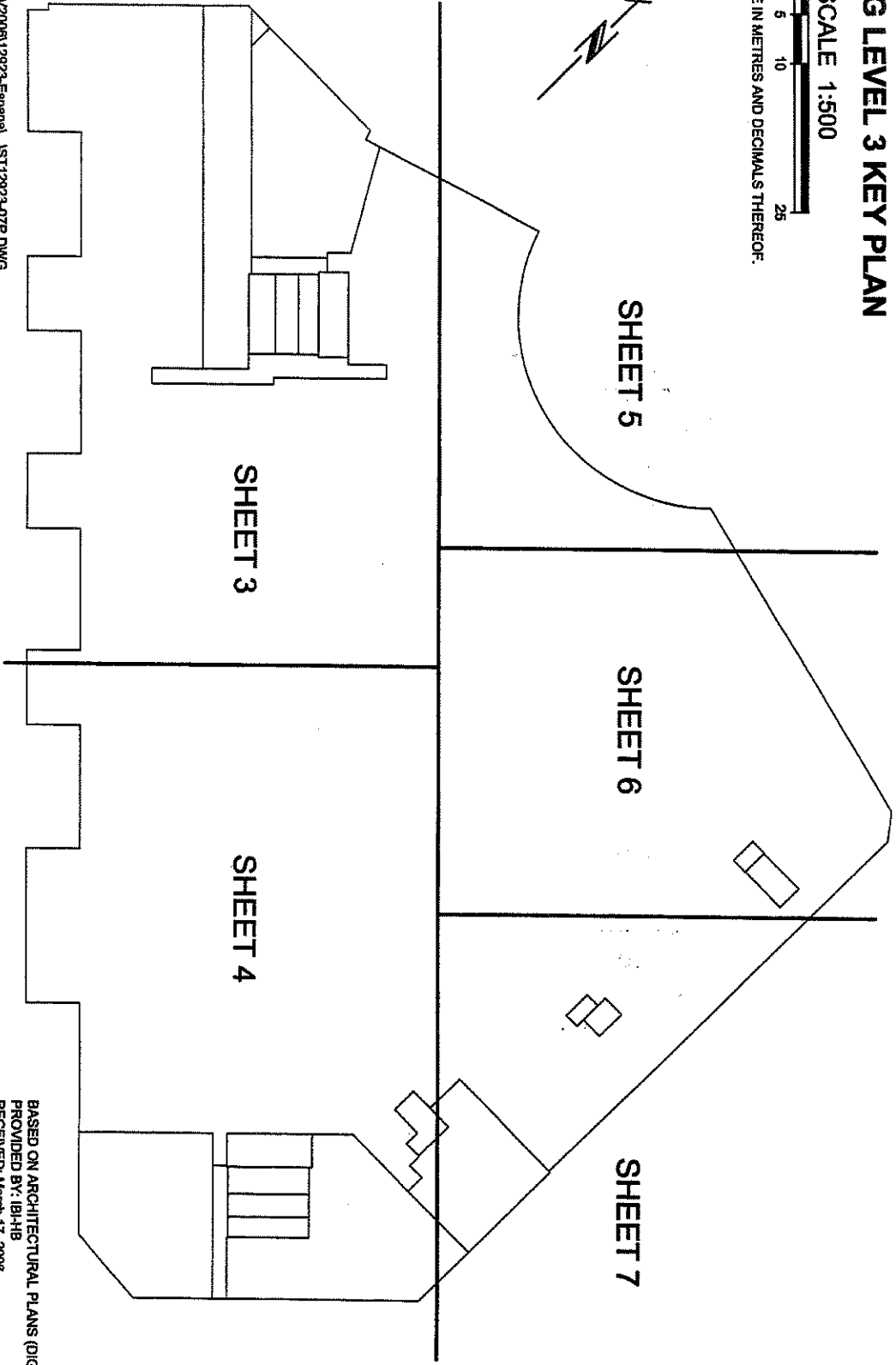
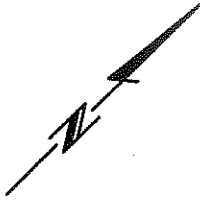


# PARKING LEVEL 3 KEY PLAN

SCALE 1:500



ALL DISTANCES ARE IN METRES AND DECIMALS THEREOF.



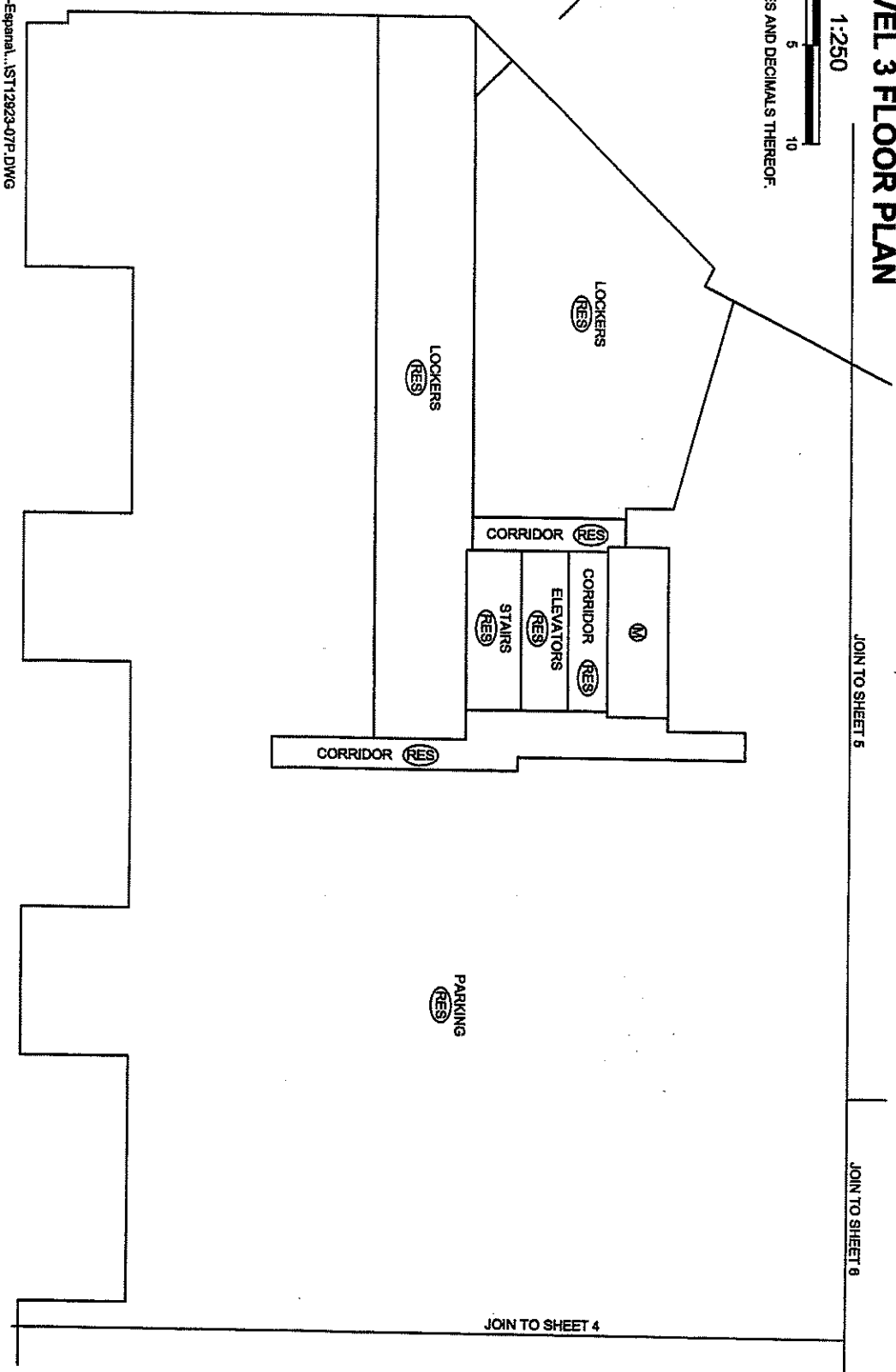
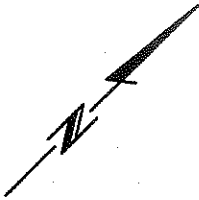
DRAWING FILE: \\W20006\12923-Español...ST12923-07P.DWG

BASED ON ARCHITECTURAL PLANS (DIGITAL COPY)  
PROVIDED BY: IBH-HB  
RECEIVED: March 17, 2008

# PARKING LEVEL 3 FLOOR PLAN

SCALE 1:250

ALL DISTANCES ARE IN METRES AND DECIMALS THEREOF.



BASED ON ARCHITECTURAL  
PLANS (DIGITAL COPY)  
PROVIDED BY: IBH-HB  
RECEIVED: March 17, 2006

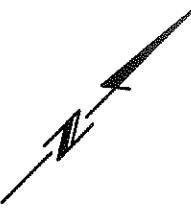
DRAWING FILE: \\W2006\12923-Espenal...ST12923-07P.DWG

# PARKING LEVEL 3 FLOOR PLAN

SCALE 1:250



ALL DISTANCES ARE IN METRES AND DECIMALS THEREOF.



JOIN TO SHEET 3

JOIN TO SHEET 6

JOIN TO SHEET 7

PARKING  
(RES)

STAIRS  
(RES)

LOCKERS  
(RES)

STAIRS  
(RES)  
ELEVATORS  
(RES)  
CORRIDOR  
(RES)

LOCKERS  
(RES)

CORRIDOR  
(RES)

DRAWING FILE: INV200812823-España...IST12823-07P.DWG

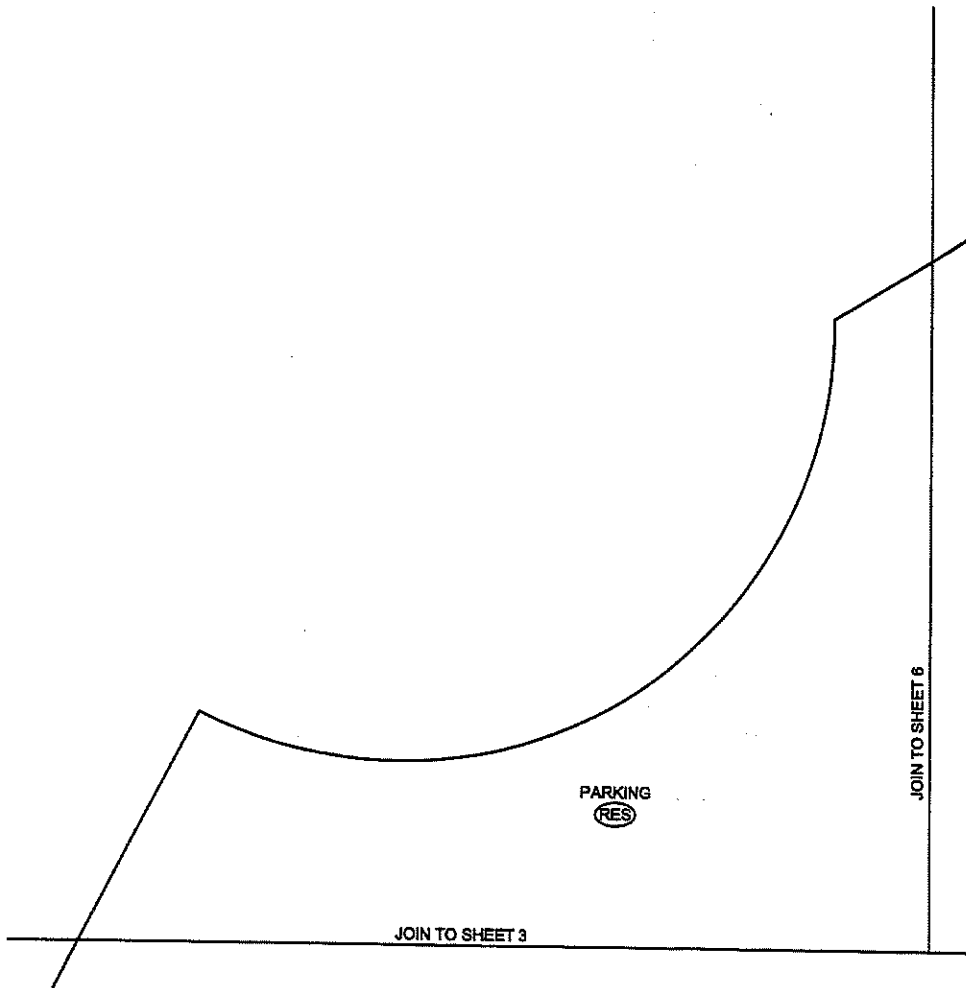
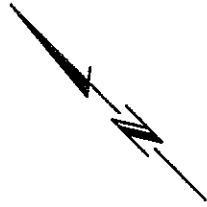
BASED ON ARCHITECTURAL PLANS (DIGITAL COPY)  
PROVIDED BY: IBI-HB  
RECEIVED: March 17, 2008

# PARKING LEVEL 3 FLOOR PLAN

SCALE 1:250



ALL DISTANCES ARE IN METRES AND DECIMALS THEREOF.

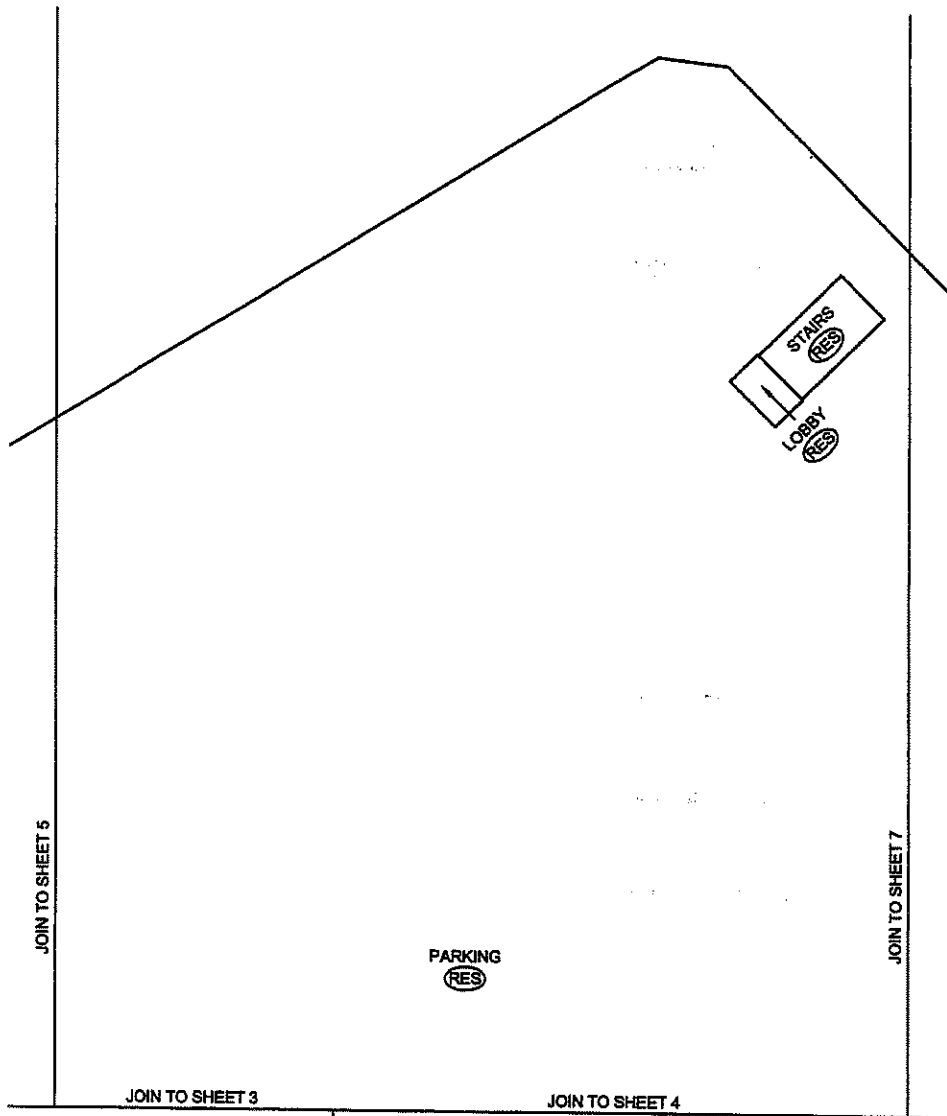
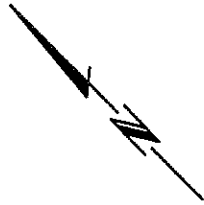


# PARKING LEVEL 3 FLOOR PLAN

SCALE 1:250



ALL DISTANCES ARE IN METRES AND DECIMALS THEREOF.

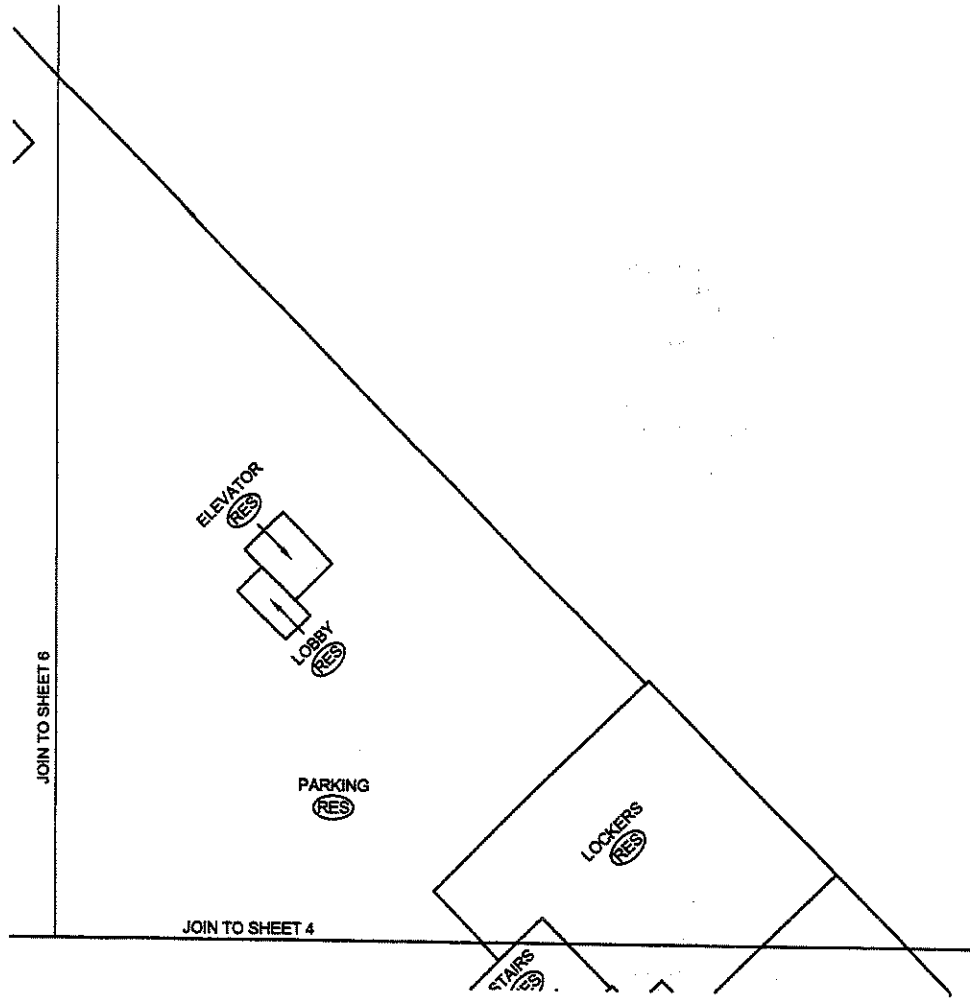
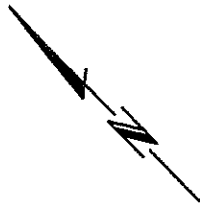


# PARKING LEVEL 3 FLOOR PLAN

SCALE 1:250



ALL DISTANCES ARE IN METRES AND DECIMALS THEREOF.



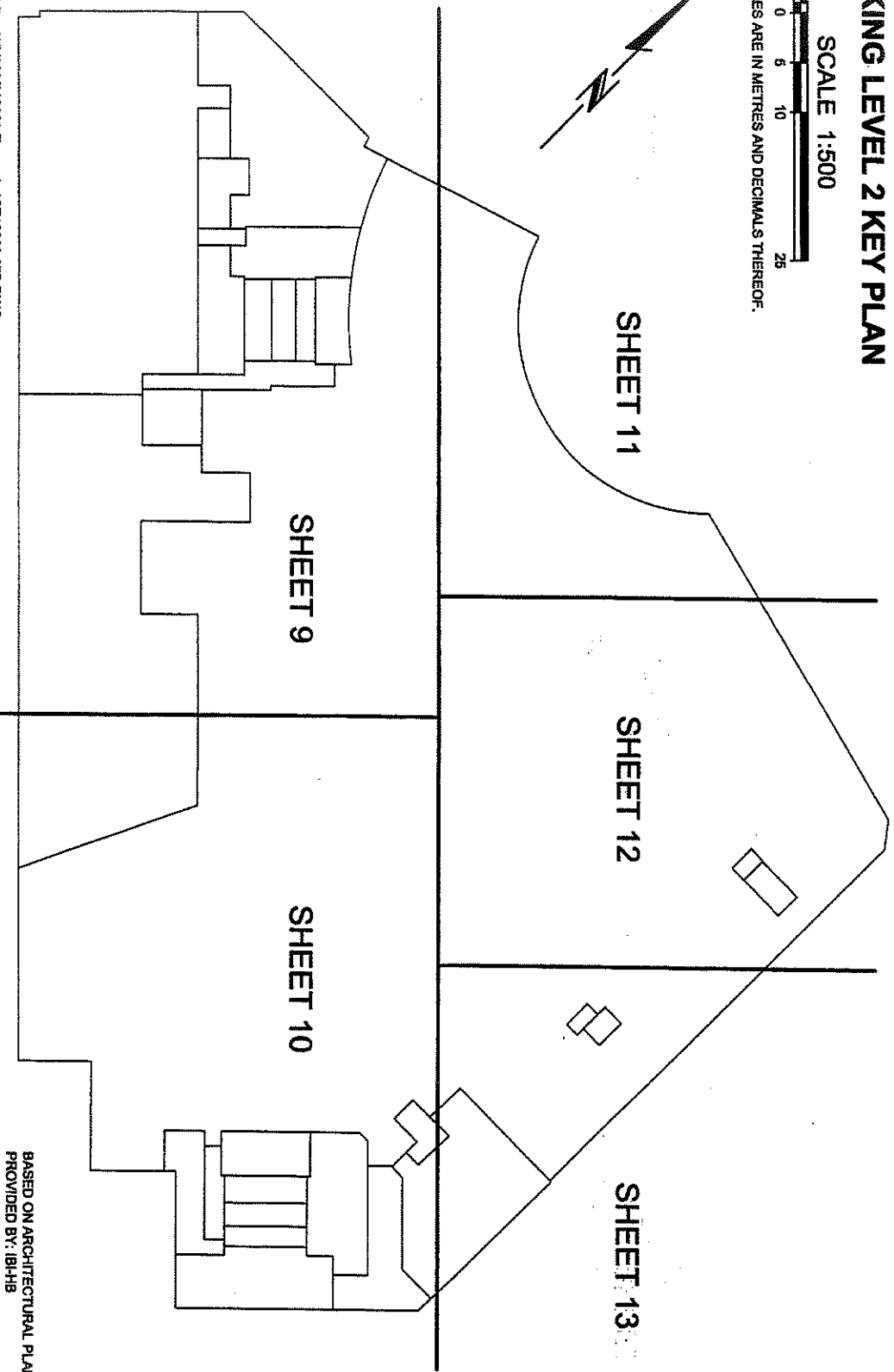
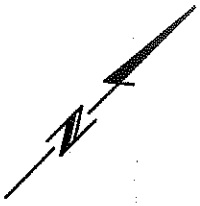


# PARKING LEVEL 2 KEY PLAN

SCALE 1:500



ALL DISTANCES ARE IN METRES AND DECIMALS THEREOF.



 DRAWING FILE: MW200812823-Espanal...1ST12823-07P.DWG

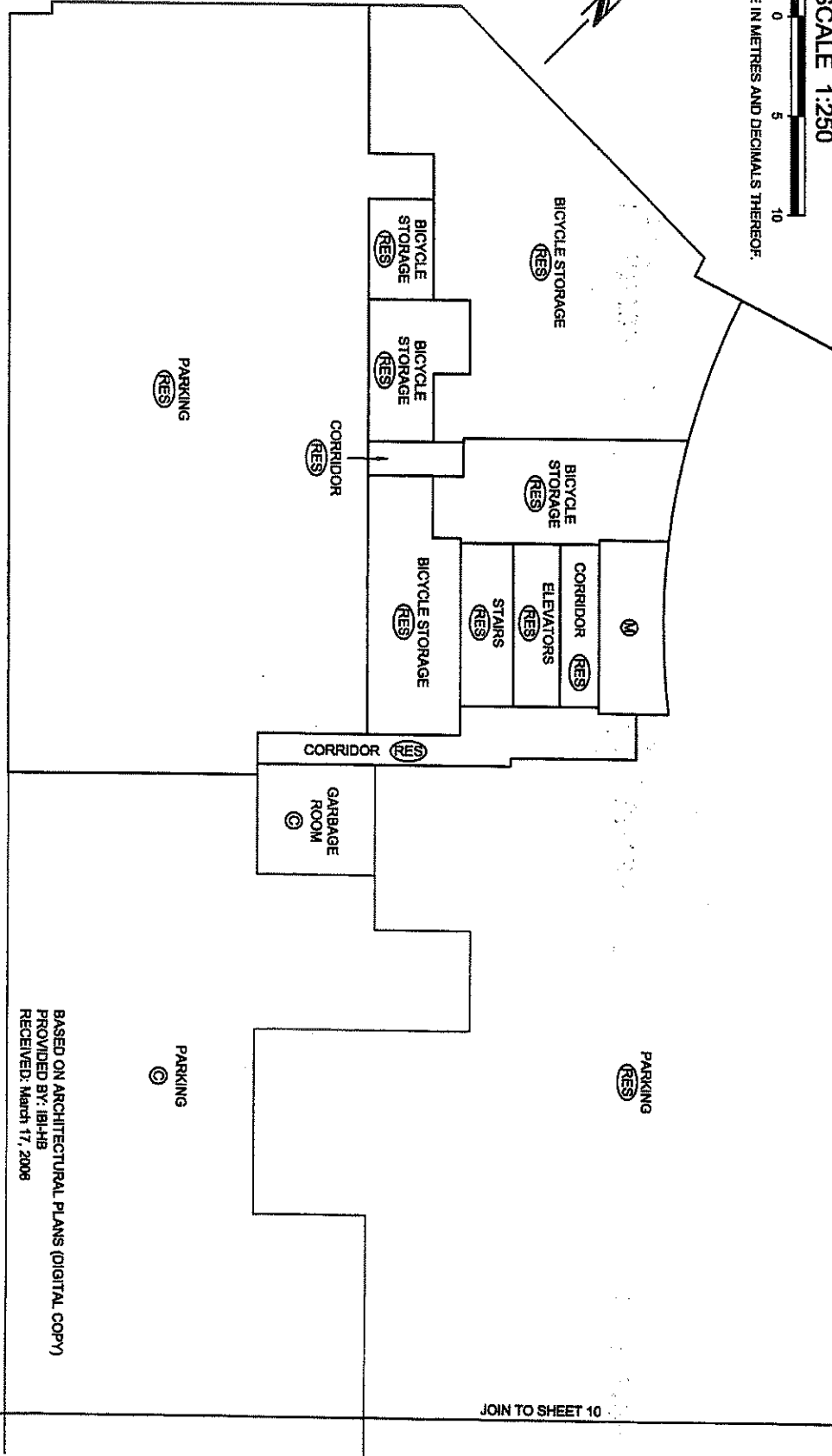
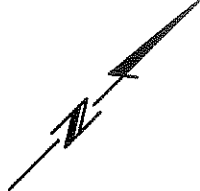
BASED ON ARCHITECTURAL PLANS (DIGITAL COPY)  
PROVIDED BY: IBH-HB  
RECEIVED: March 17, 2006

# PARKING LEVEL 2 FLOOR PLAN

SCALE 1:250



ALL DISTANCES ARE IN METRES AND DECIMALS THEREOF.



DRAWING FILE: INV200812923-España...\_IST12923-07P.DWG

BASED ON ARCHITECTURAL PLANS (DIGITAL COPY)  
PROVIDED BY: IB-HB  
RECEIVED: March 17, 2008

# PARKING LEVEL 2 FLOOR PLAN

SCALE 1:250



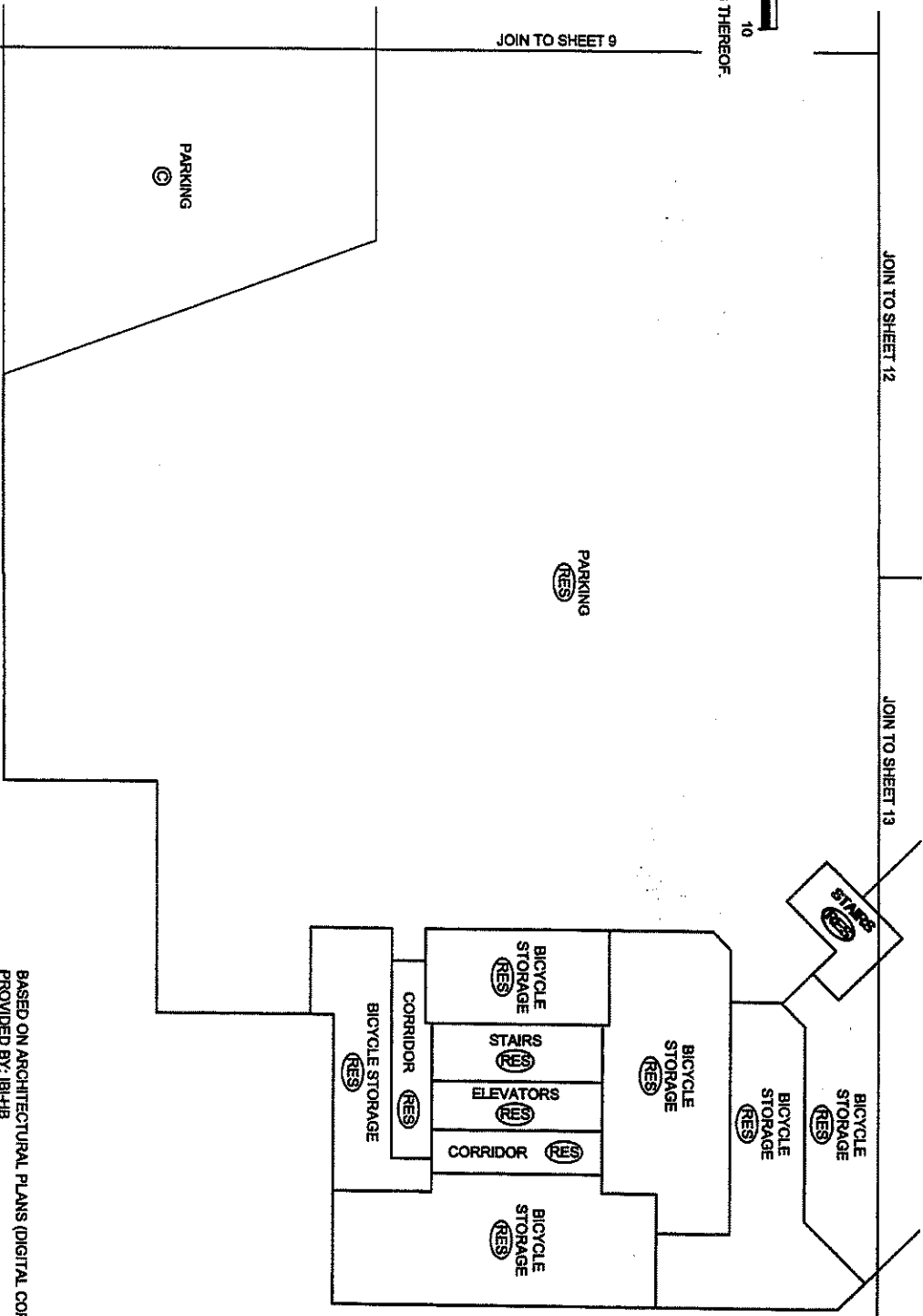
ALL DISTANCES ARE IN METRES AND DECIMALS THEREOF.



JOIN TO SHEET 9

JOIN TO SHEET 12

JOIN TO SHEET 13



△  
DRAWING FILE: INV200612923-Español...IST12923-07P.DWG

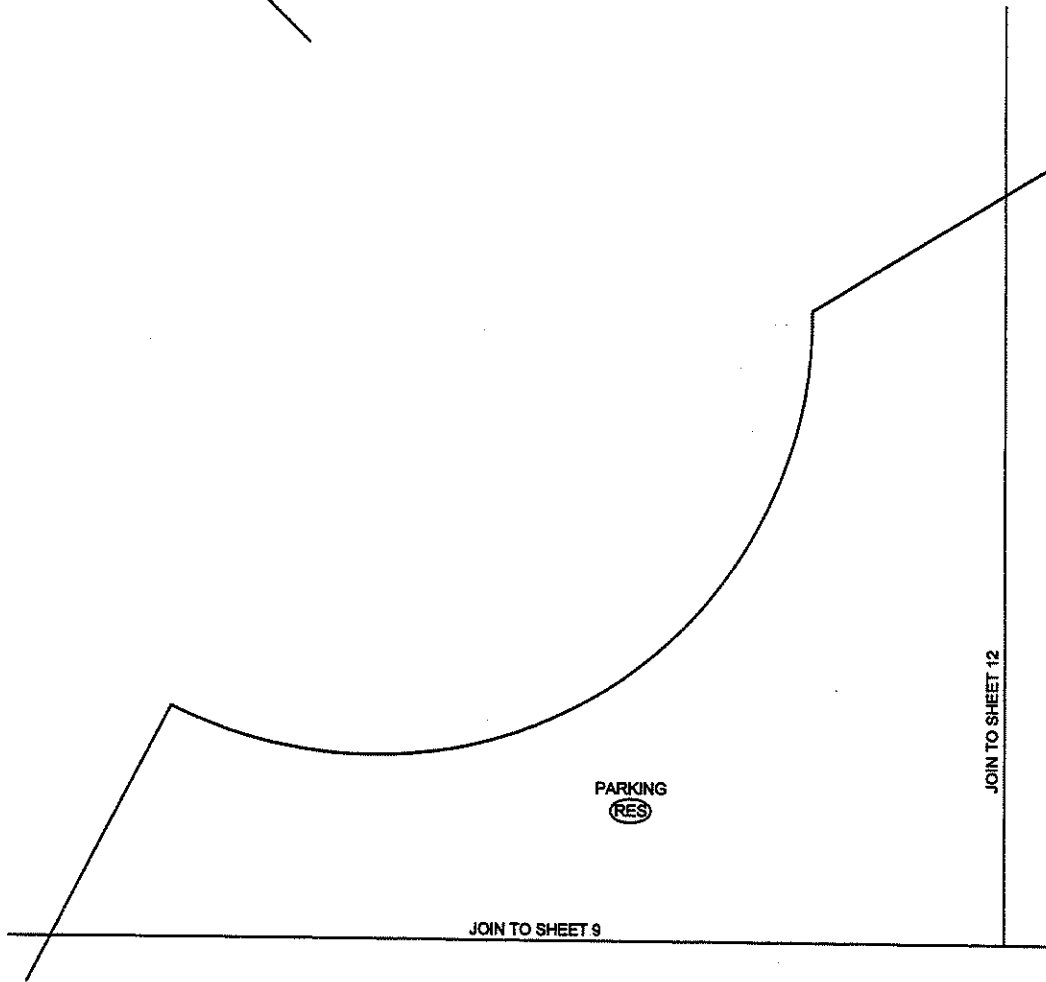
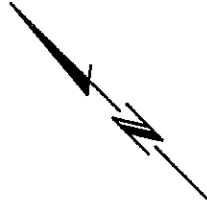
BASED ON ARCHITECTURAL PLANS (DIGITAL COPY)  
PROVIDED BY: IB-HB  
RECEIVED: March 17, 2006

# PARKING LEVEL 2 FLOOR PLAN

SCALE 1:250



ALL DISTANCES ARE IN METRES AND DECIMALS THEREOF.

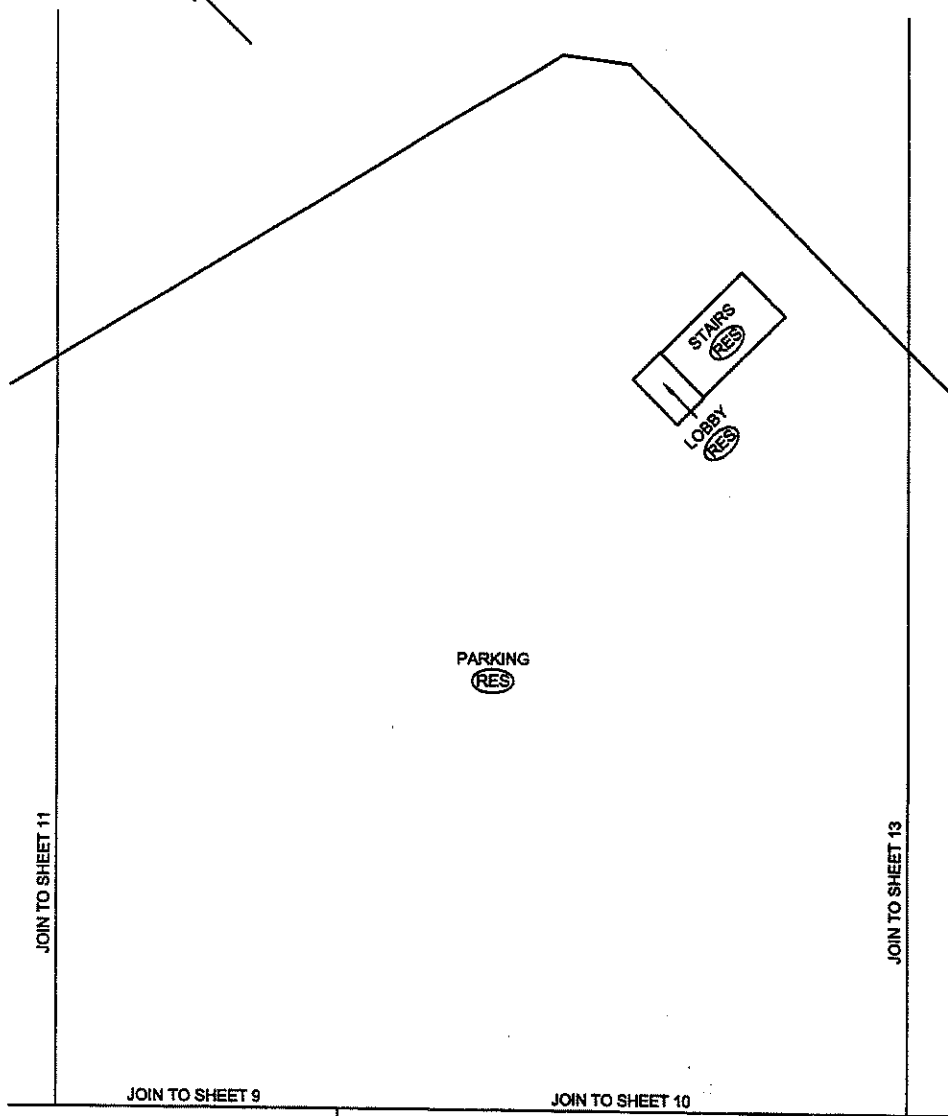
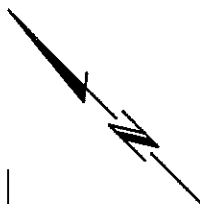


# PARKING LEVEL 2 FLOOR PLAN

SCALE 1:250



ALL DISTANCES ARE IN METRES AND DECIMALS THEREOF.

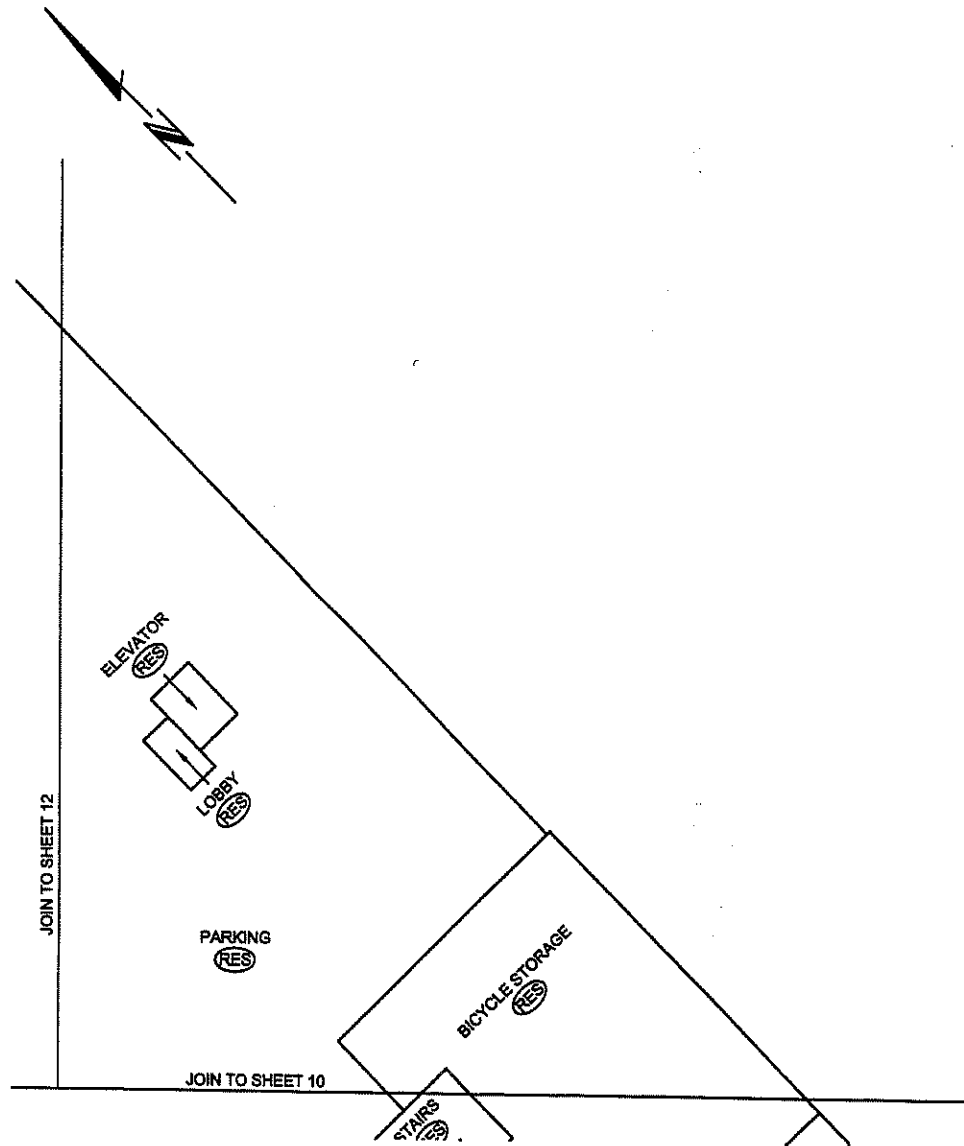


# PARKING LEVEL 2 FLOOR PLAN

SCALE 1:250



ALL DISTANCES ARE IN METRES AND DECIMALS THEREOF.

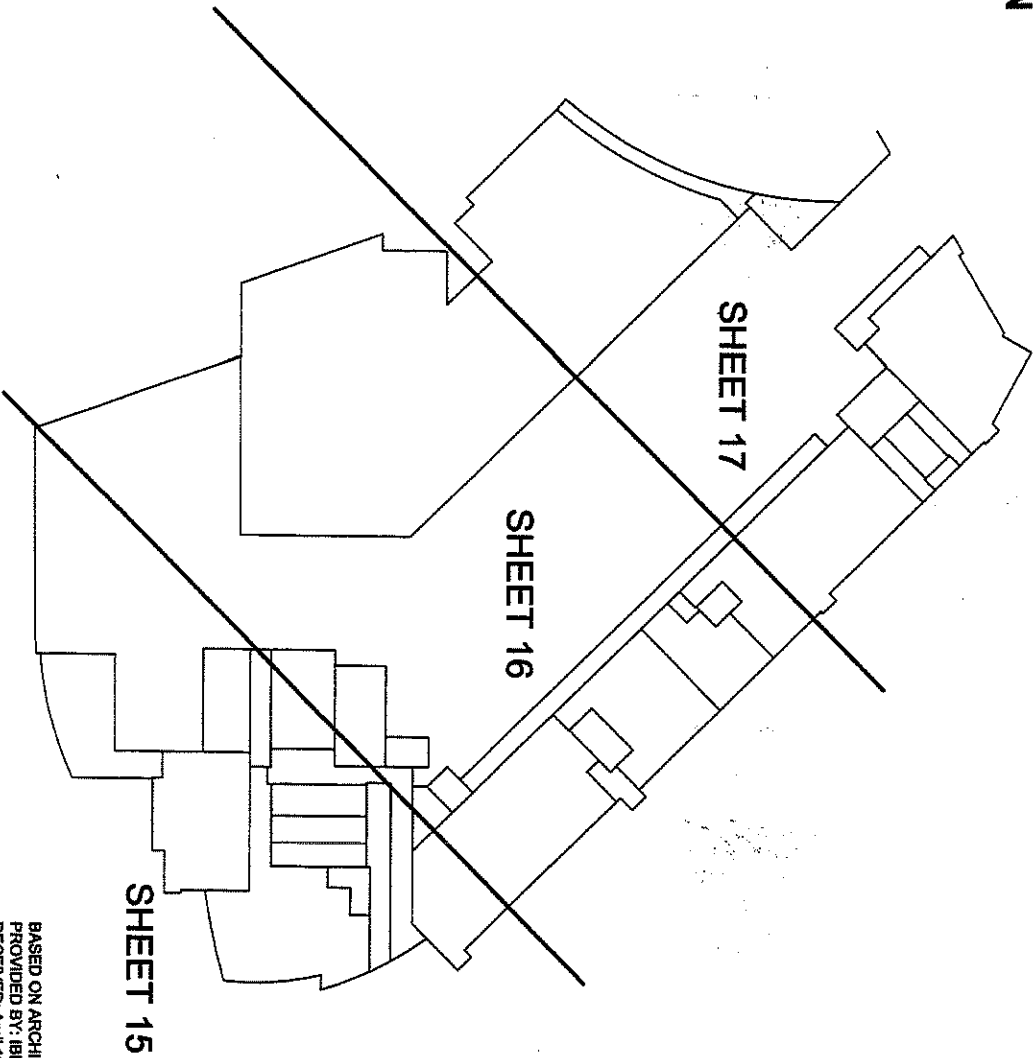
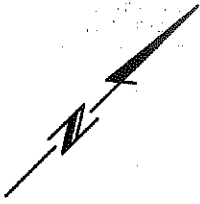



# PARKING LEVEL 1 KEY PLAN

SCALE 1:500



ALL DISTANCES ARE IN METRES AND DECIMALS THEREOF.



 DRAWING FILE: IW\2006\12923-Espanal...1\ST12923-07P.DWG

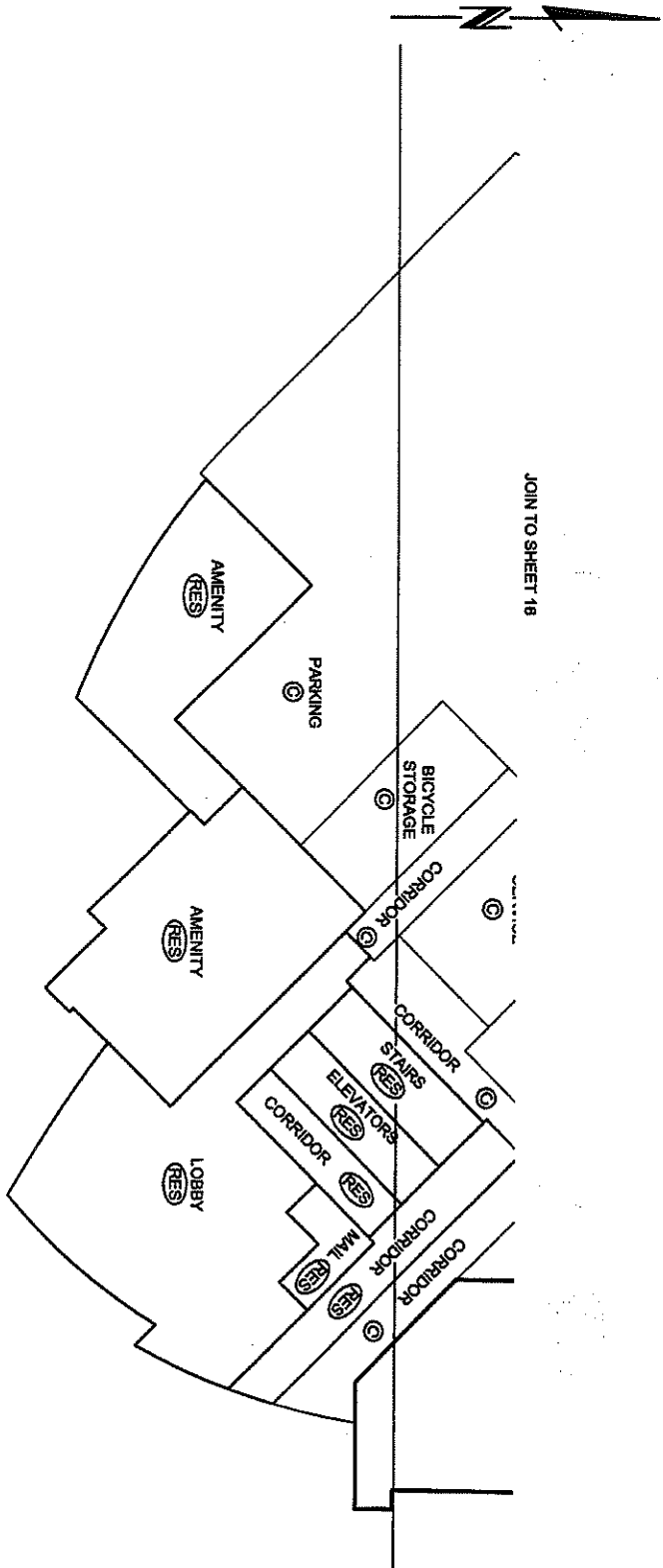
BASED ON ARCHITECTURAL PLANS (DIGITAL COPY)  
PROVIDED BY: IBI-HB  
RECEIVED: APRIL 12, 2008

# PARKING LEVEL 1 FLOOR PLAN

SCALE 1:250



ALL DISTANCES ARE IN METRES AND DECIMALS THEREOF.



 DRAWING FILE: INV200812823-España1..IST12823-07P.DWG

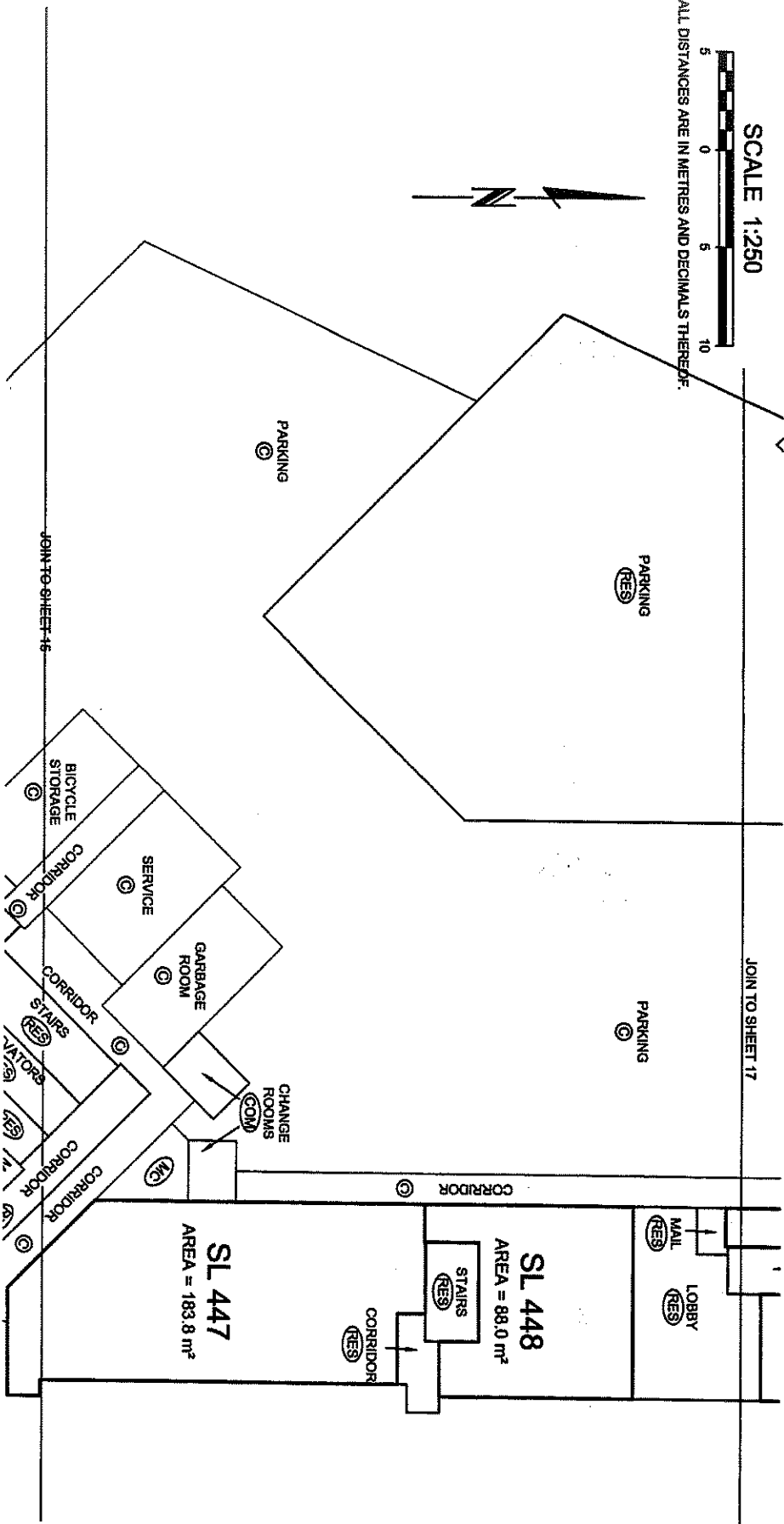
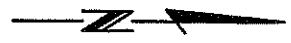
BASED ON ARCHITECTURAL PLANS (DIGITAL COPY)  
PROVIDED BY: IBI-HB  
RECEIVED: April 12, 2008



# PARKING LEVEL 1 FLOOR PLAN

SCALE 1:250

ALL DISTANCES ARE IN METRES AND DECIMALS THEREAFTER.



DRAWING FILE: \INV2008\12823-Espanel\...ST12823-07P.DWG

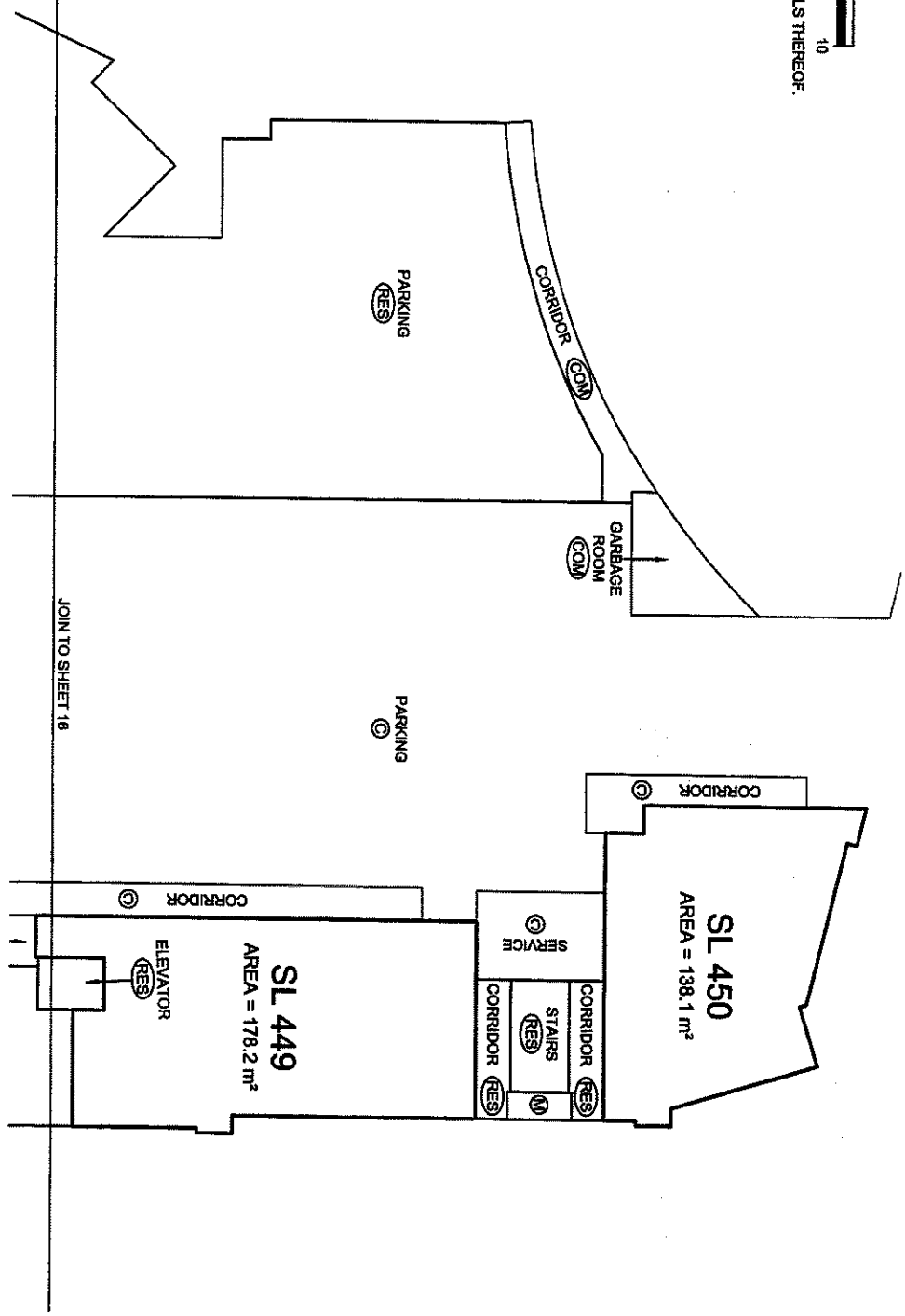
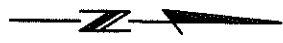
BASED ON ARCHITECTURAL PLANS (DIGITAL COPY)  
PROVIDED BY: IBH-HB  
RECEIVED: April 12, 2008

# PARKING LEVEL 1 FLOOR PLAN

SCALE 1:250



ALL DISTANCES ARE IN METRES AND DECIMALS THEREOF.



BASED ON ARCHITECTURAL PLANS (DIGITAL COPY)  
PROVIDED BY: 1844B  
RECEIVED: April 12, 2006

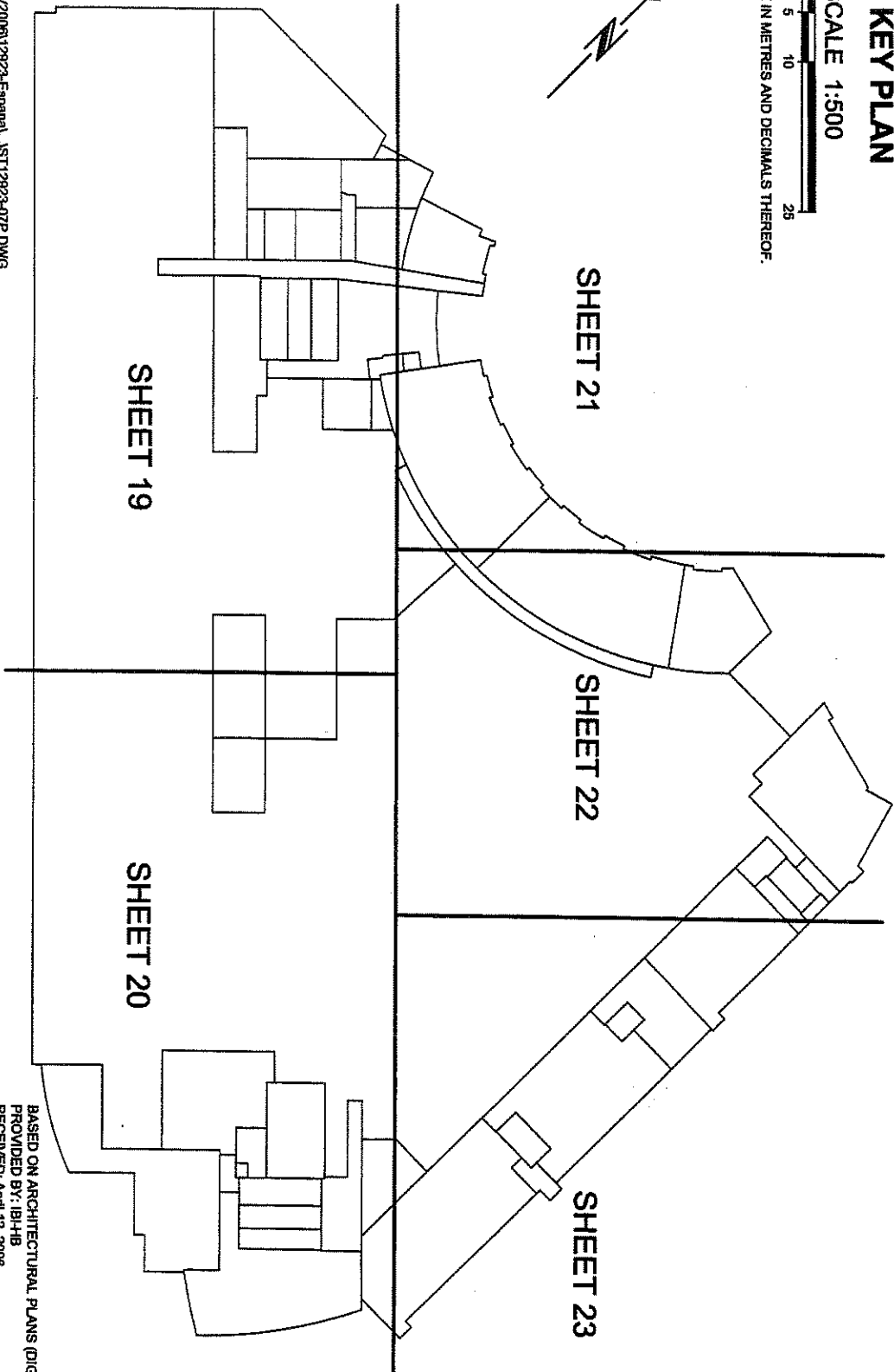
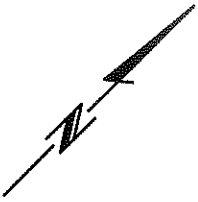
DRAWING FILE: \NV2008\12923-Espanol...ST12923-07P.DWG


# LEVEL 1 KEY PLAN

SCALE 1:500



ALL DISTANCES ARE IN METRES AND DECIMALS THEREOF.



 DRAWING FILE: INV200612823-Espanal...IST12823-07P.DWG

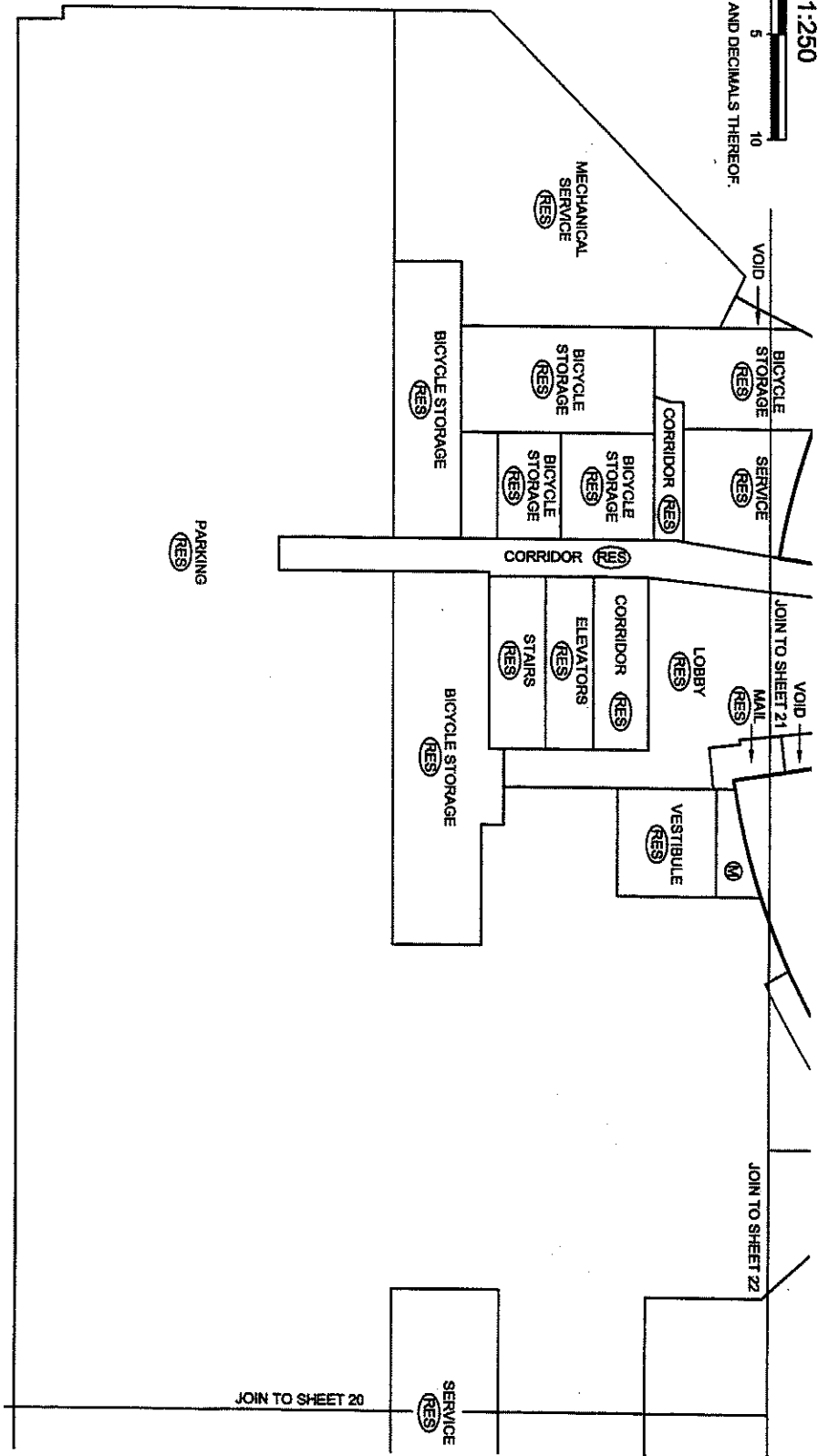
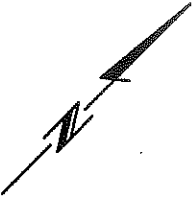
BASED ON ARCHITECTURAL PLANS (DIGITAL COPY)  
PROVIDED BY: IBLHB  
RECEIVED: April 12, 2006

# LEVEL 1 FLOOR PLAN

SCALE 1:250



ALL DISTANCES ARE IN METRES AND DECIMALS THEREOF.



DRAWING FILE: WV200612923-España...ST12923-07P.DWG

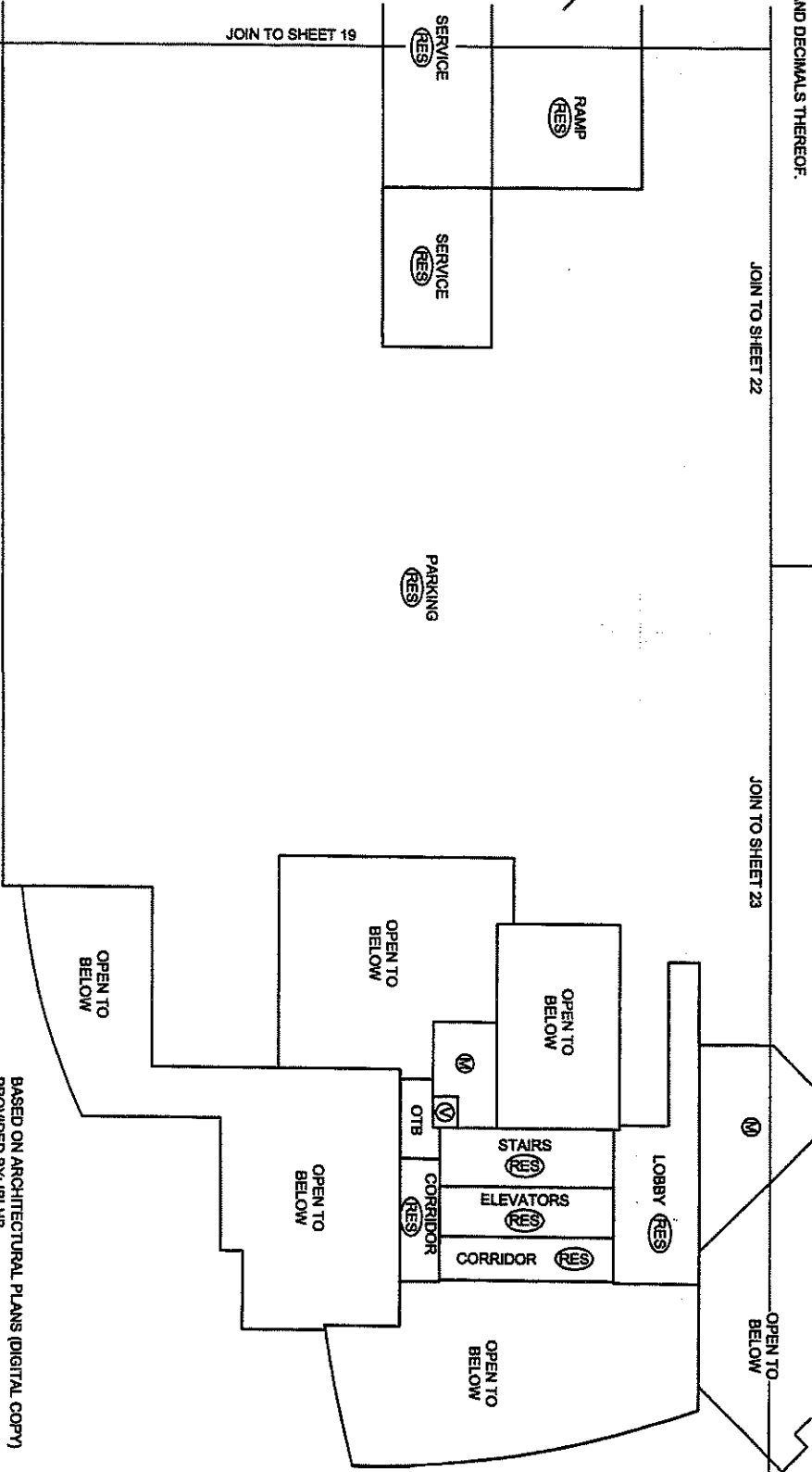
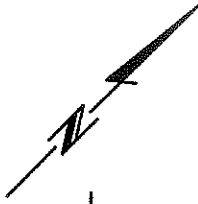
BASED ON ARCHITECTURAL PLANS (DIGITAL COPY)  
PROVIDED BY: IBI-HB  
RECEIVED: April 12, 2006

# LEVEL 1 FLOOR PLAN

SCALE 1:250



ALL DISTANCES ARE IN METRES AND DECIMALS THEREOF.



DRAWING FILE: WV200612923-Espinal,IST12923-07P.DWG

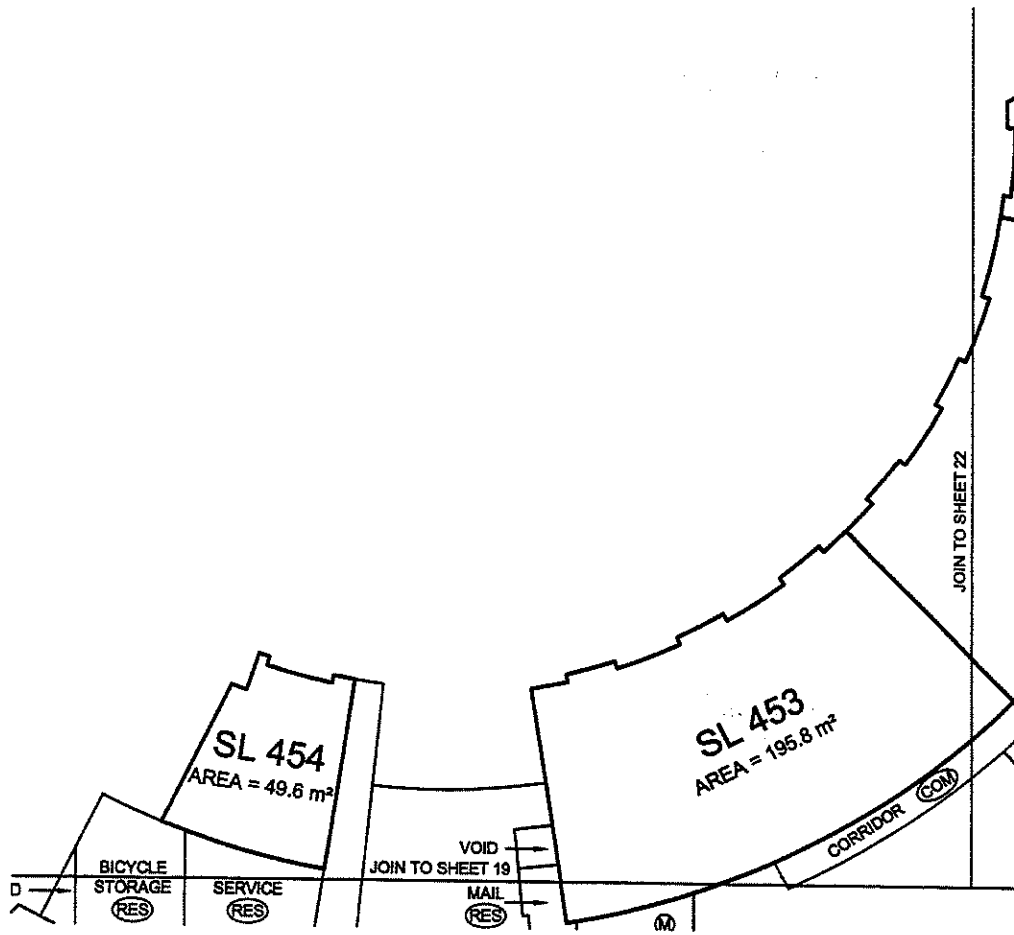
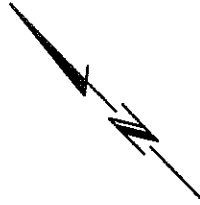
BASED ON ARCHITECTURAL PLANS (DIGITAL COPY)  
PROVIDED BY: IBH18  
RECEIVED: April 12, 2008

# LEVEL 1 FLOOR PLAN

SCALE 1:250



ALL DISTANCES ARE IN METRES AND DECIMALS THEREOF.

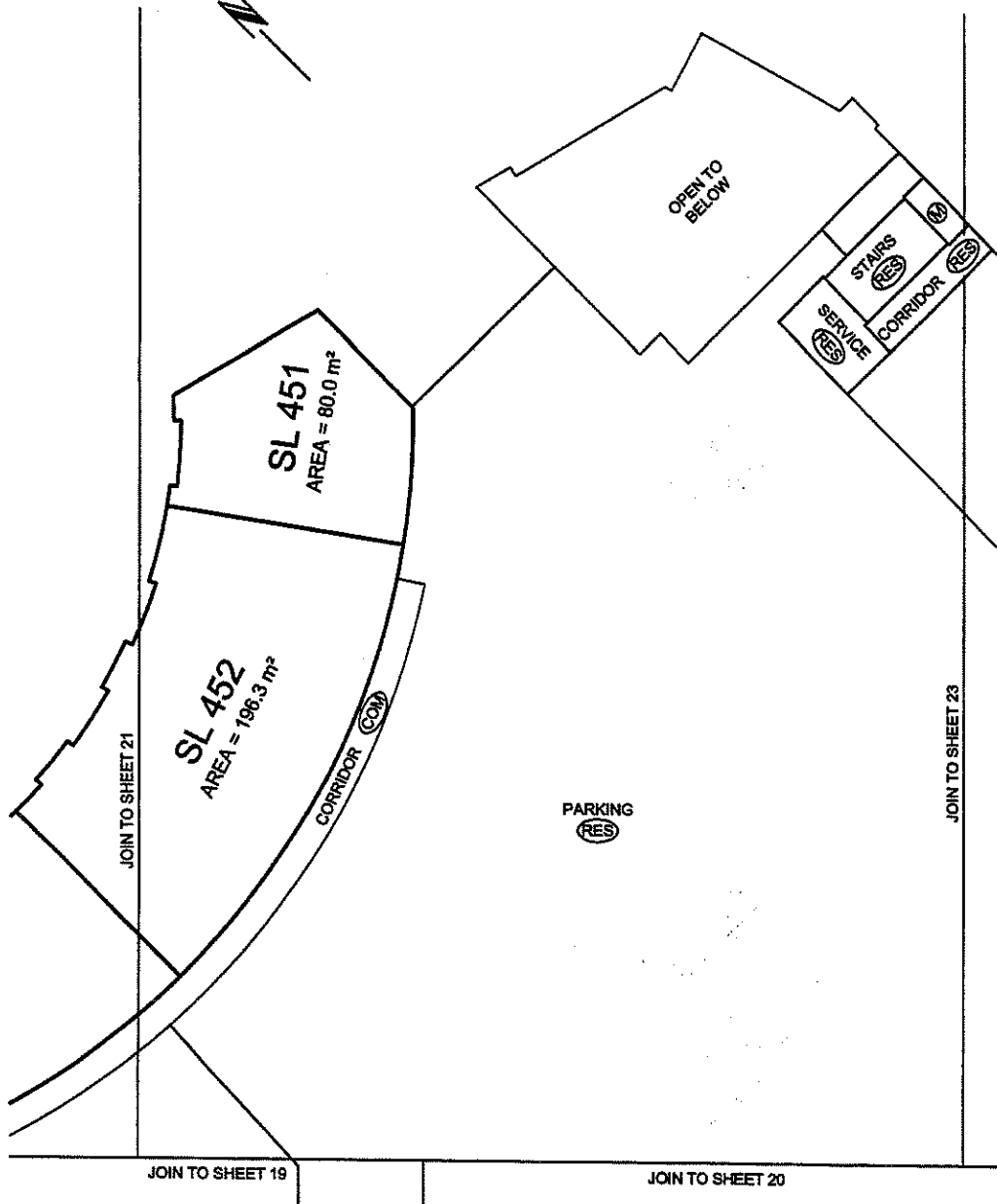
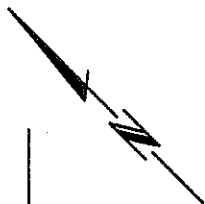


# LEVEL 1 FLOOR PLAN

SCALE 1:250



ALL DISTANCES ARE IN METRES AND DECIMALS THEREOF.

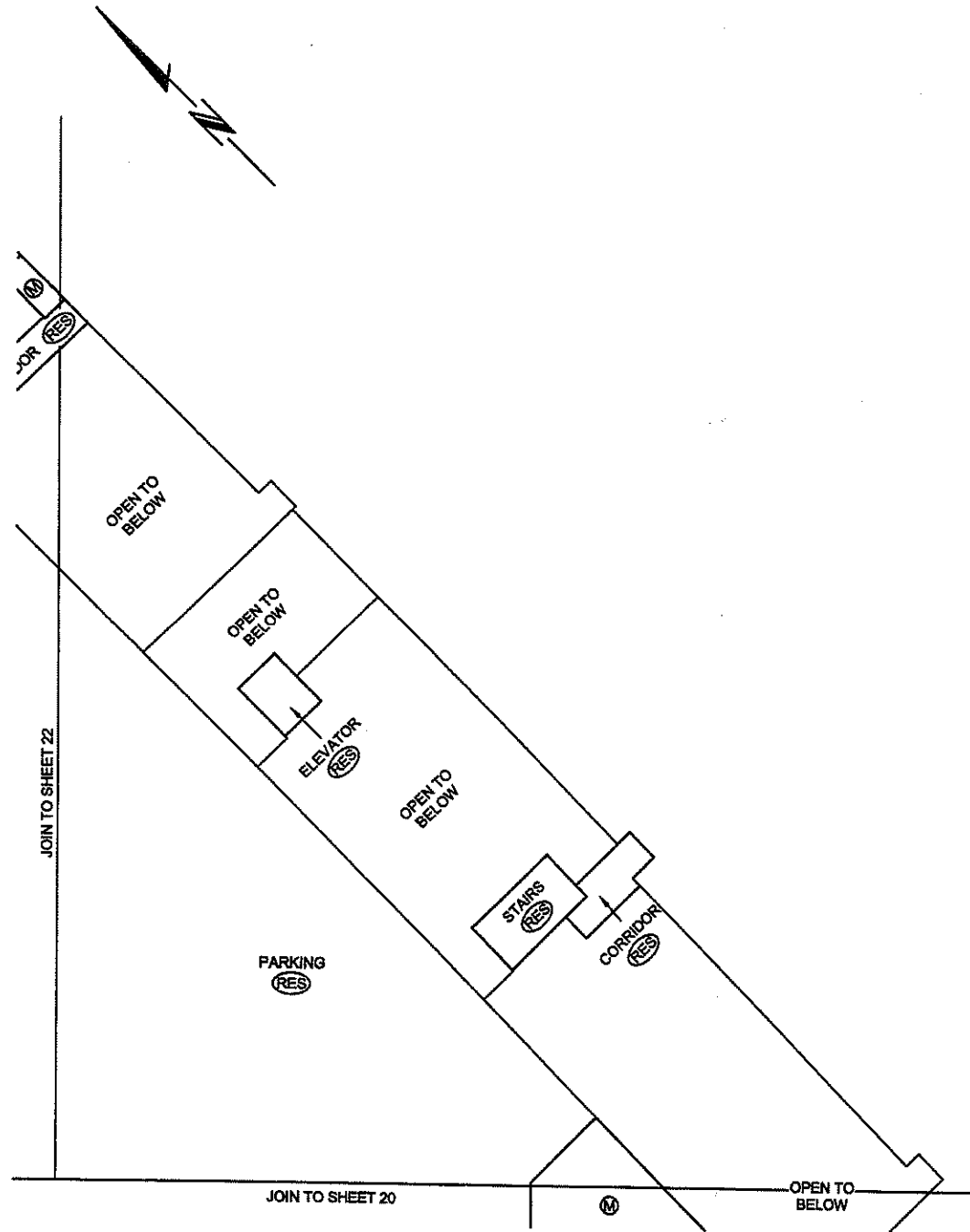


# LEVEL 1 FLOOR PLAN

SCALE 1:250



ALL DISTANCES ARE IN METRES AND DECIMALS THEREOF.



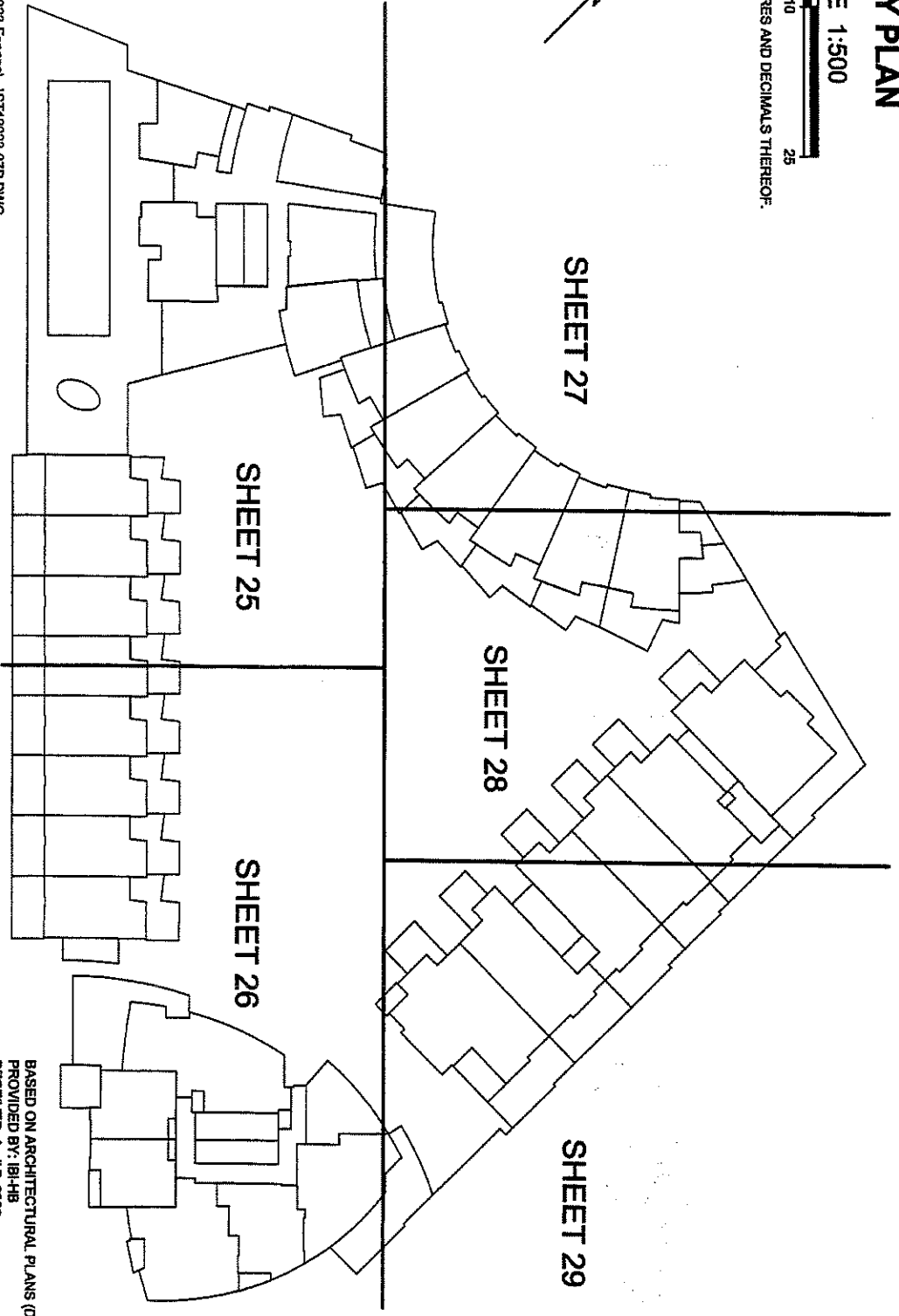


# LEVEL 2 KEY PLAN

SCALE 1:500



ALL DISTANCES ARE IN METRES AND DECIMALS THEREOF.

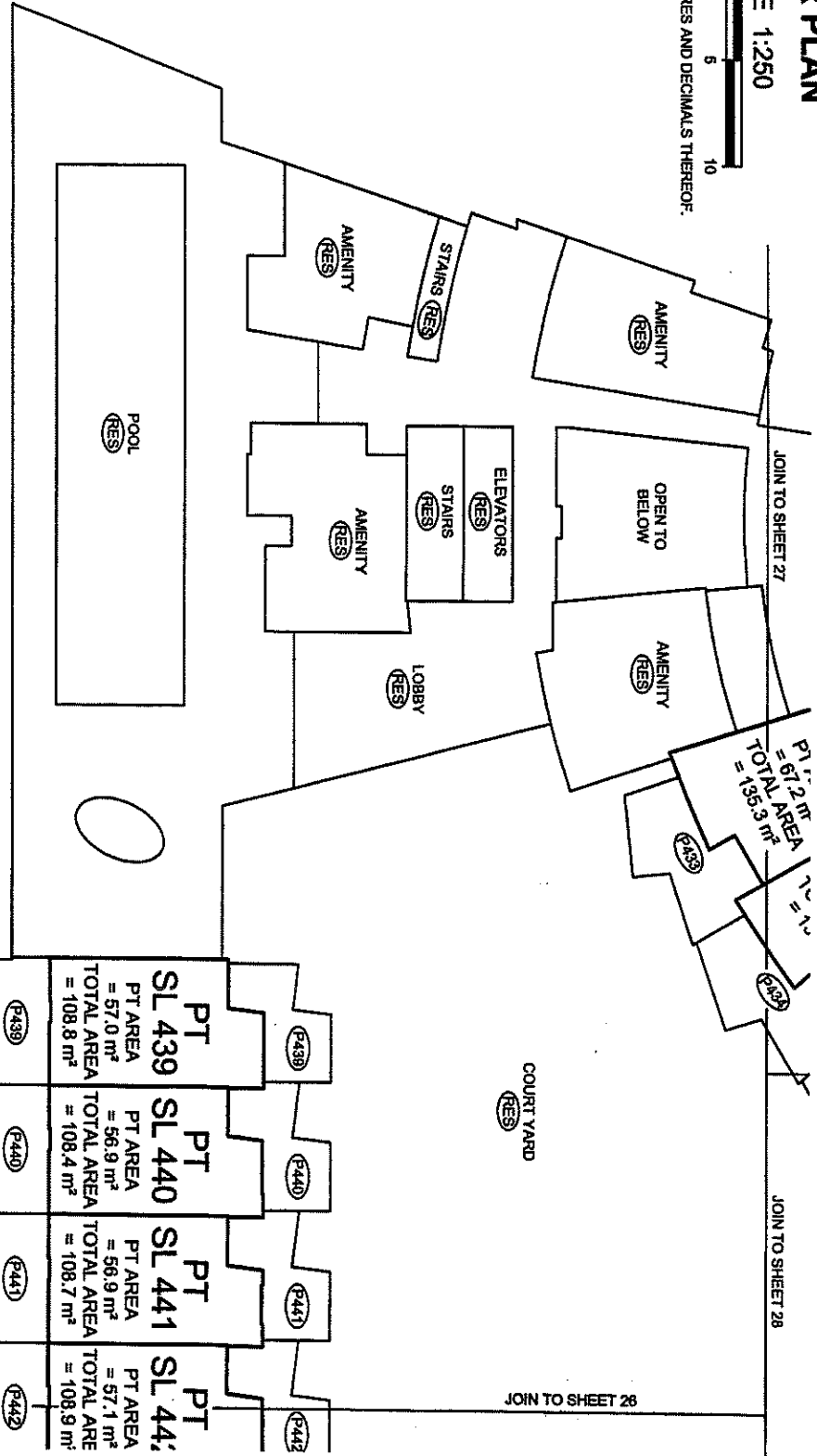
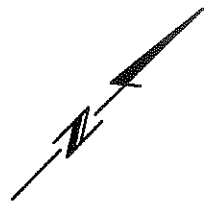


DRAWING FILE: INV200612923-Español...IST12923-07P.DWG

BASED ON ARCHITECTURAL PLANS (DIGITAL COPY)  
PROVIDED BY: IB-HB  
RECEIVED: April 7, 2006

# LEVEL 2 FLOOR PLAN

SCALE 1:250



BALCONY AREAS ARE DEFINED AS TO HEIGHT BY THE CENTRE OF THE FLOOR ABOVE OR ITS EXTENSIONS OR WHERE THERE IS NO FLOOR ABOVE, BY THE AVERAGE HEIGHT OF A STRATA LOT WITHIN THE SAME BUILDING, UNLESS OTHERWISE NOTED.

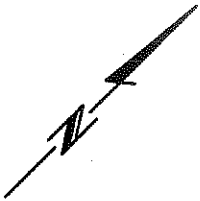
DRAWING FILE: W\2008\12923-España\...ST12923-07P.DWG

PT SL 439	PT SL 440	PT SL 441	PT SL 44
PT AREA = 57.0 m <sup>2</sup>	PT AREA = 56.9 m <sup>2</sup>	PT AREA = 56.9 m <sup>2</sup>	PT AREA = 57.1 m <sup>2</sup>
TOTAL AREA = 108.8 m <sup>2</sup>	TOTAL AREA = 108.4 m <sup>2</sup>	TOTAL AREA = 108.7 m <sup>2</sup>	TOTAL AREA = 108.9 m <sup>2</sup>

BASED ON ARCHITECTURAL PLANS (DIGITAL COPY)  
 PROVIDED BY: IBI4HB  
 RECEIVED: March 17, 2006

# LEVEL 2 FLOOR PLAN

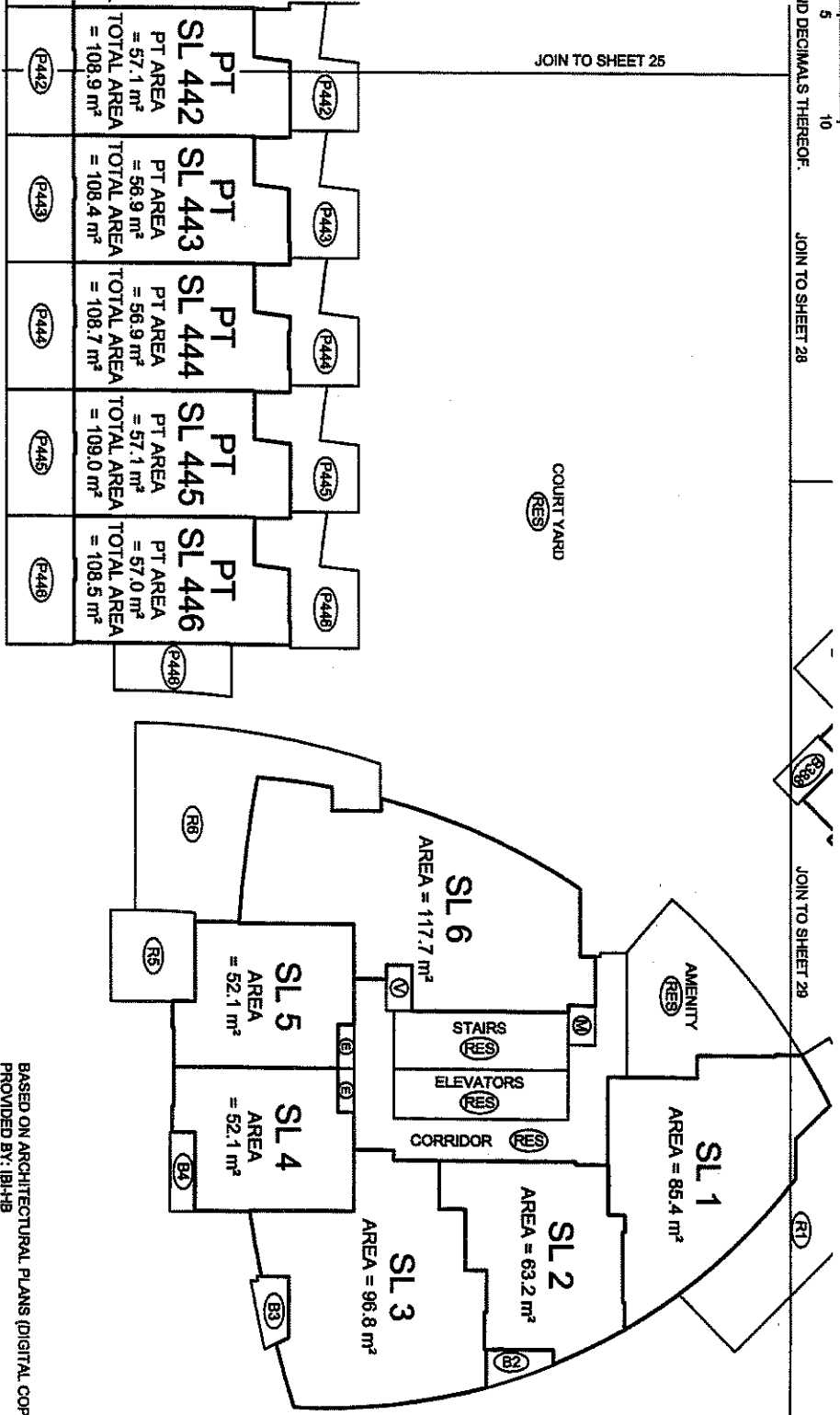
SCALE 1:250



JOIN TO SHEET 25

JOIN TO SHEET 28

JOIN TO SHEET 29



BALCONY AREAS ARE DEFINED AS TO HEIGHT BY THE CENTRE OF THE FLOOR ABOVE OR ITS EXTENSIONS OR WHERE THERE IS NO FLOOR ABOVE, BY THE AVERAGE HEIGHT OF A STRATA LOT WITHIN THE SAME BUILDING, UNLESS OTHERWISE NOTED.

DRAWING FILE: \W2006\12923-Espanal...1ST\2923-07P.DWG

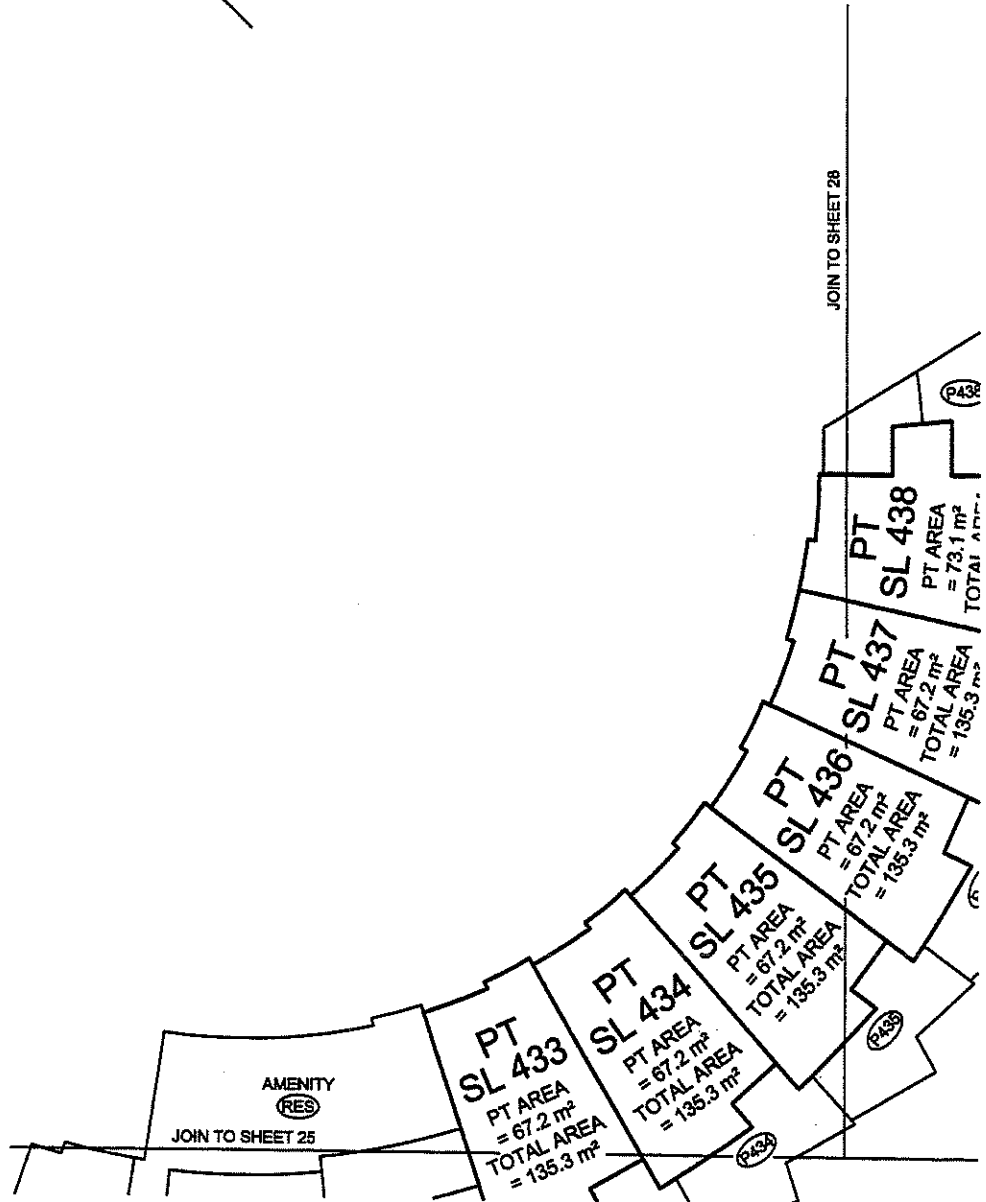
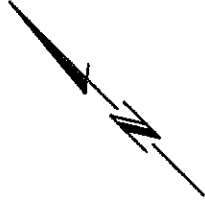
BASED ON ARCHITECTURAL PLANS (DIGITAL COPY)  
 PROVIDED BY: IBH-HB  
 RECEIVED: March 17, 2006

# LEVEL 2 FLOOR PLAN

SCALE 1:250



ALL DISTANCES ARE IN METRES AND DECIMALS THEREOF.

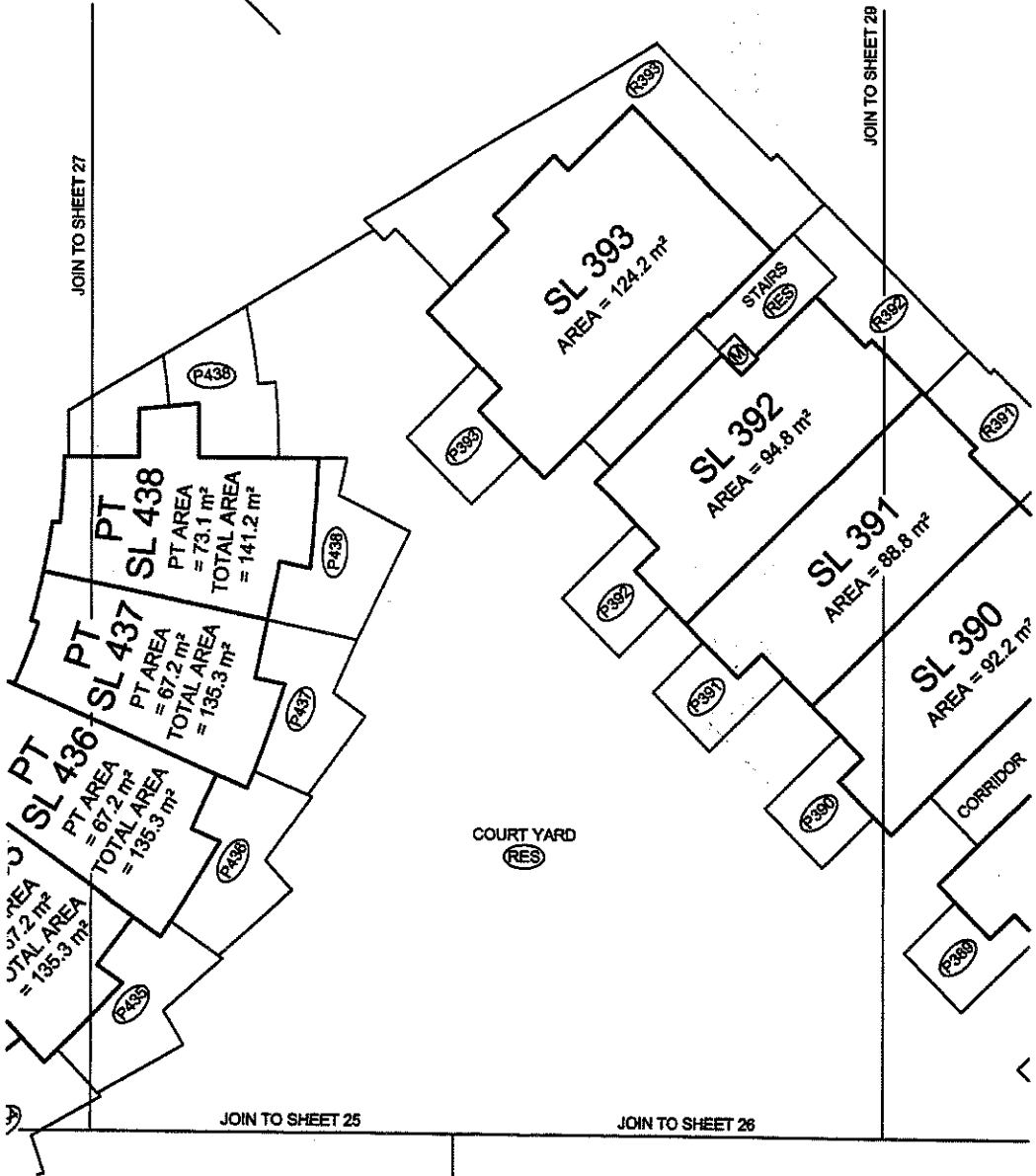
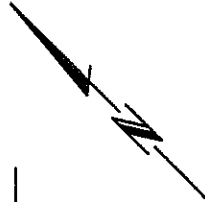


# LEVEL 2 FLOOR PLAN

SCALE 1:250



ALL DISTANCES ARE IN METRES AND DECIMALS THEREOF.

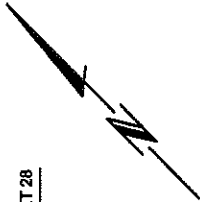


# LEVEL 2 FLOOR PLAN

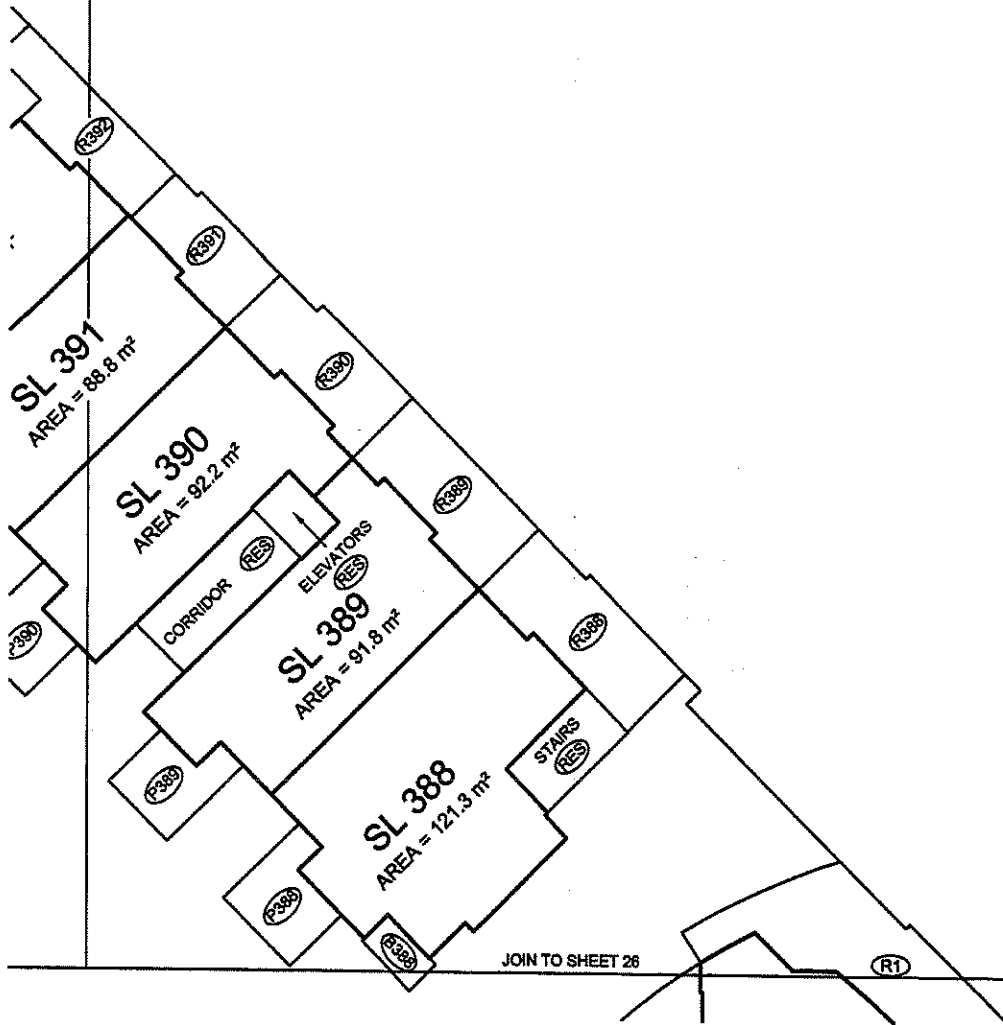
SCALE 1:250



ALL DISTANCES ARE IN METRES AND DECIMALS THEREOF.



JOIN TO SHEET 28

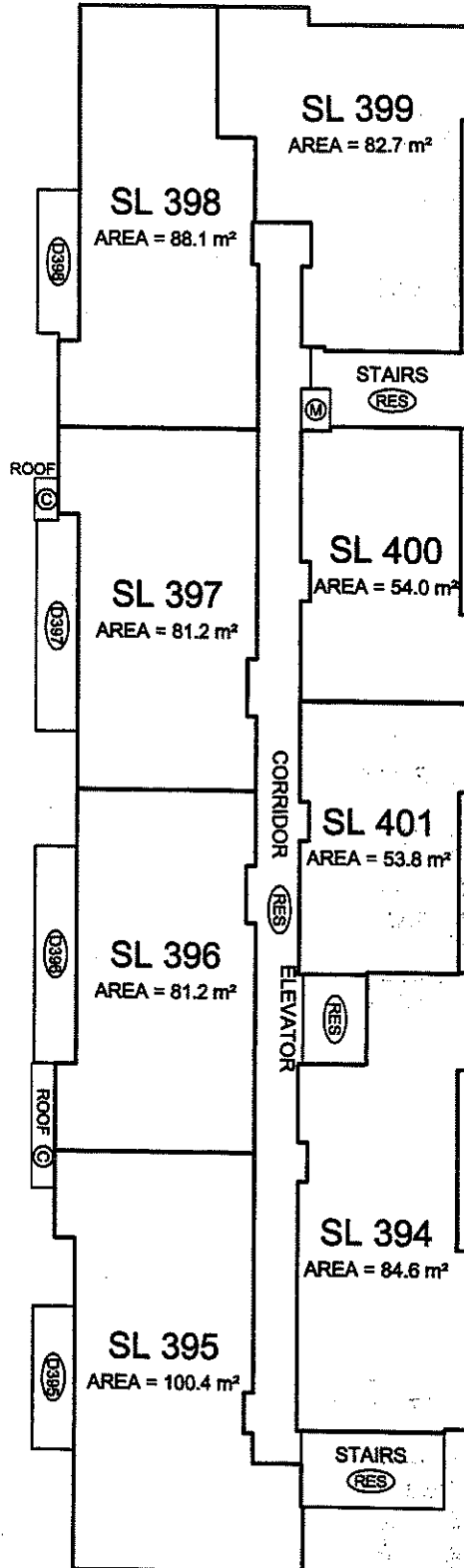
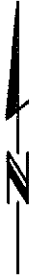


DRAWING FILE: WV2006\12923-Espana\...IST12923-07P.DWG

BASED ON ARCHITECTURAL PLANS (DIGITAL COPY)  
PROVIDED BY: IBI-HB  
RECEIVED: March 17, 2006

# BUILDING C LEVEL 3 FLOOR PLAN

SCALE 1:200



BALCONY AREAS ARE DEFINED AS TO HEIGHT BY THE CENTRE OF THE FLOOR ABOVE OR ITS EXTENSIONS OR WHERE THERE IS NO FLOOR ABOVE, BY THE AVERAGE HEIGHT OF A STRATA LOT WITHIN THE SAME BUILDING, UNLESS OTHERWISE NOTED.



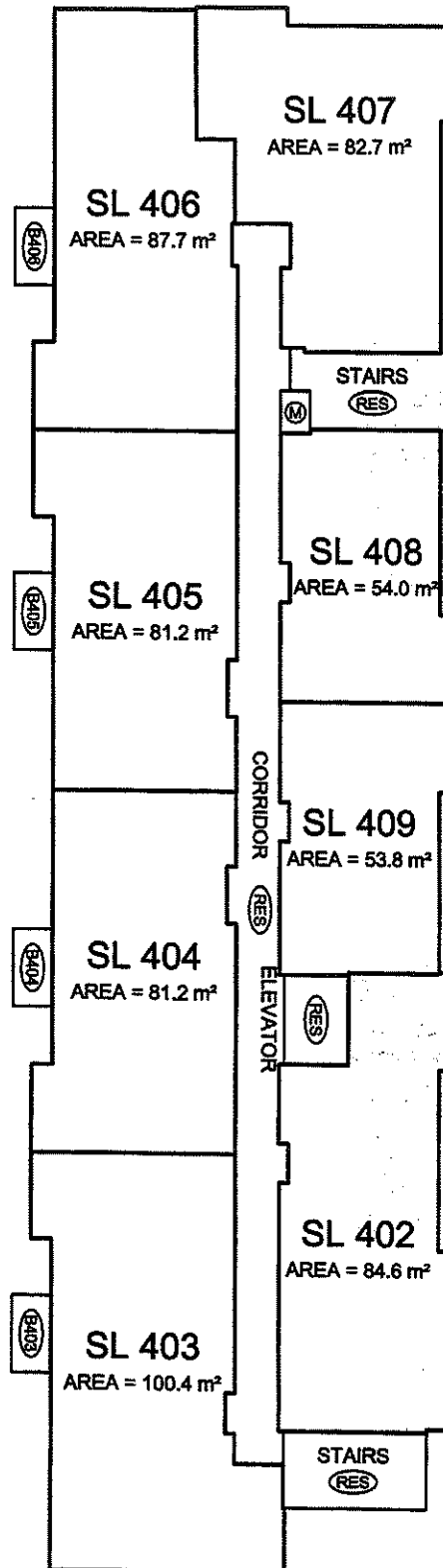
DRAWING FILE: WV2006\12923-Espana...12923-07P.DWG

BASED ON ARCHITECTURAL PLANS (DIGITAL COPY)  
PROVIDED BY: IBI-HB  
RECEIVED: March 17, 2006

# BUILDING C LEVEL 4 FLOOR PLAN

(DEVELOPER'S LEVEL 5)

SCALE 1:200



BALCONY AREAS ARE DEFINED AS TO HEIGHT BY THE CENTRE OF THE FLOOR ABOVE OR ITS EXTENSIONS OR WHERE THERE IS NO FLOOR ABOVE, BY THE AVERAGE HEIGHT OF A STRATA LOT WITHIN THE SAME BUILDING, UNLESS OTHERWISE NOTED.



DRAWING FILE: W\2006\12923-Espanal...IST12923-07P.DWG

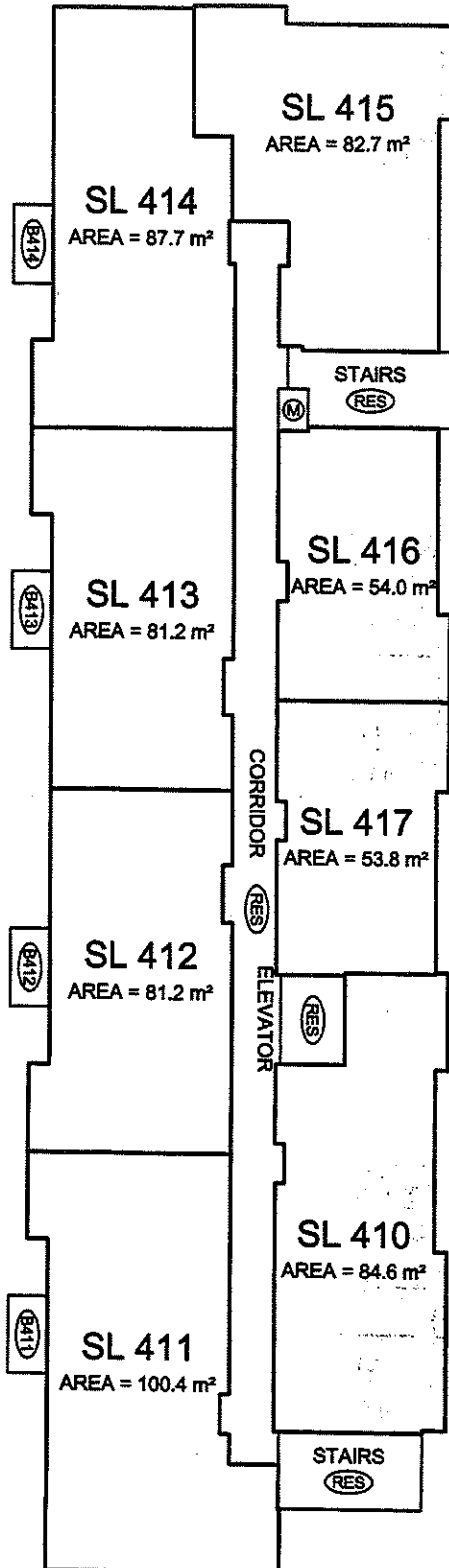
BASED ON ARCHITECTURAL PLANS (DIGITAL COPY)  
PROVIDED BY: JBI-HB  
RECEIVED: March 17, 2006



# BUILDING C LEVEL 5 FLOOR PLAN

(DEVELOPER'S LEVEL 6)

SCALE 1:200



BALCONY AREAS ARE DEFINED AS TO HEIGHT BY THE CENTRE OF THE FLOOR ABOVE OR ITS EXTENSIONS OR WHERE THERE IS NO FLOOR ABOVE, BY THE AVERAGE HEIGHT OF A STRATA LOT WITHIN THE SAME BUILDING, UNLESS OTHERWISE NOTED.



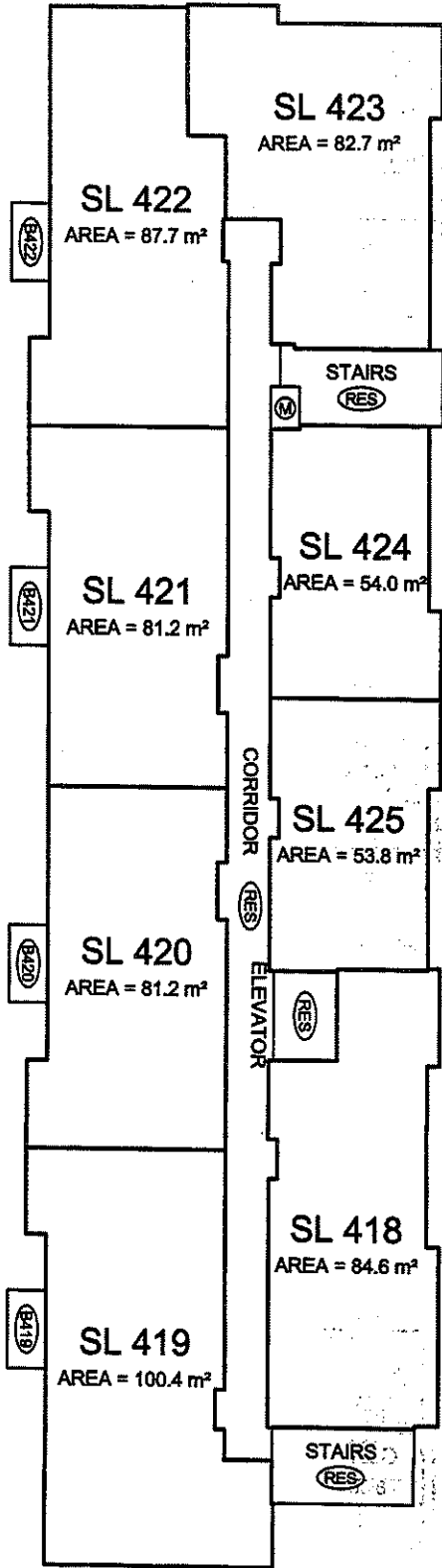
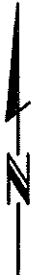
DRAWING FILE: WV2006\12923-Espanal...1ST12923-07P.DWG

BASED ON ARCHITECTURAL PLANS (DIGITAL COPY)  
 PROVIDED BY: IBI-HB  
 RECEIVED: March 17, 2006

# BUILDING C LEVEL 6 FLOOR PLAN

(DEVELOPER'S LEVEL 7)

SCALE 1:200

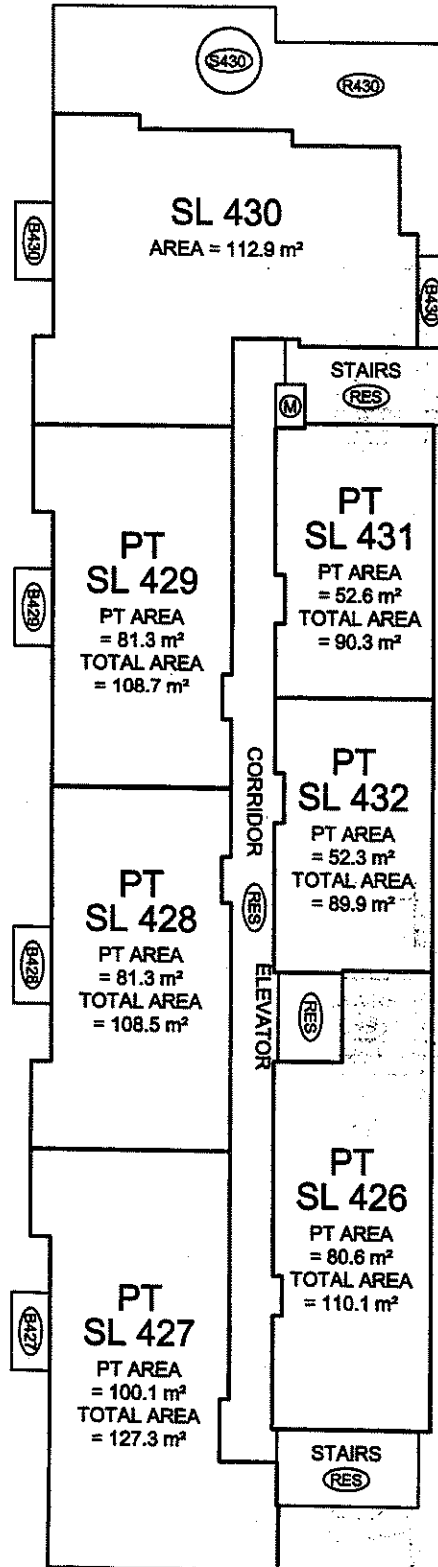


BALCONY AREAS ARE DEFINED AS TO HEIGHT BY THE CENTRE OF THE FLOOR ABOVE OR ITS EXTENSIONS OR WHERE THERE IS NO FLOOR ABOVE, BY THE AVERAGE HEIGHT OF A STRATA LOT WITHIN THE SAME BUILDING, UNLESS OTHERWISE NOTED.

# BUILDING C LEVEL 7 FLOOR PLAN

(DEVELOPER'S LEVEL 8)

SCALE 1:200



BALCONY AREAS ARE DEFINED AS TO HEIGHT BY THE CENTRE OF THE FLOOR ABOVE OR ITS EXTENSIONS OR WHERE THERE IS NO FLOOR ABOVE, BY THE AVERAGE HEIGHT OF A STRATA LOT WITHIN THE SAME BUILDING, UNLESS OTHERWISE NOTED.



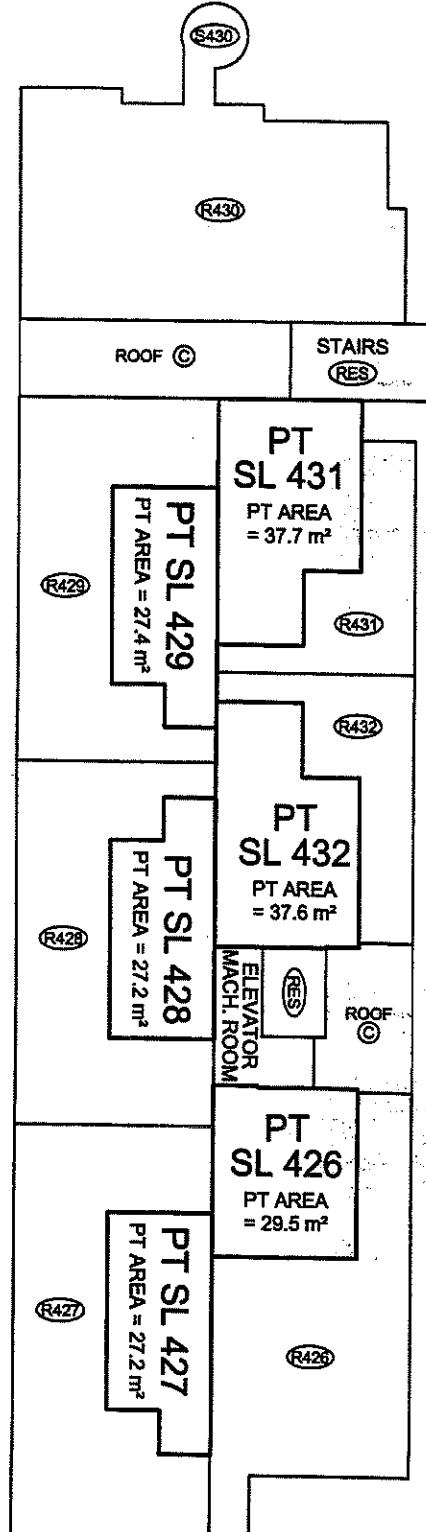
DRAWING FILE: WV2006\12923-Espanal...ST12923-07P.DWG

BASED ON ARCHITECTURAL PLANS (DIGITAL COPY)  
PROVIDED BY: IBI-HB  
RECEIVED: March 17, 2006

# BUILDING C LEVEL 8 FLOOR PLAN

(DEVELOPER'S LEVEL 9)

SCALE 1:200



BALCONY AREAS ARE DEFINED AS TO HEIGHT BY THE CENTRE OF THE FLOOR ABOVE OR ITS EXTENSIONS OR WHERE THERE IS NO FLOOR ABOVE, BY THE AVERAGE HEIGHT OF A STRATA LOT WITHIN THE SAME BUILDING, UNLESS OTHERWISE NOTED.



DRAWING FILE: WV2006\12923-Espana\...IST12923-07P.DWG

BASED ON ARCHITECTURAL PLANS (DIGITAL COPY)  
 PROVIDED BY: IBI-HB  
 RECEIVED: March 17, 2006