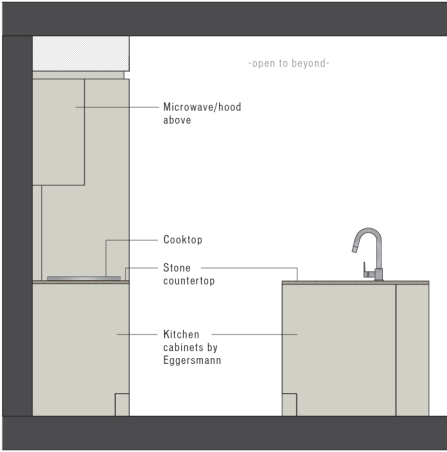
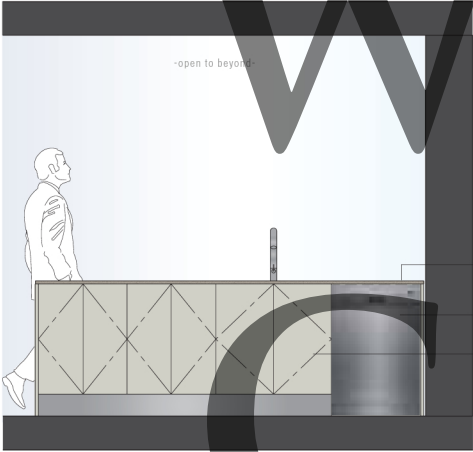


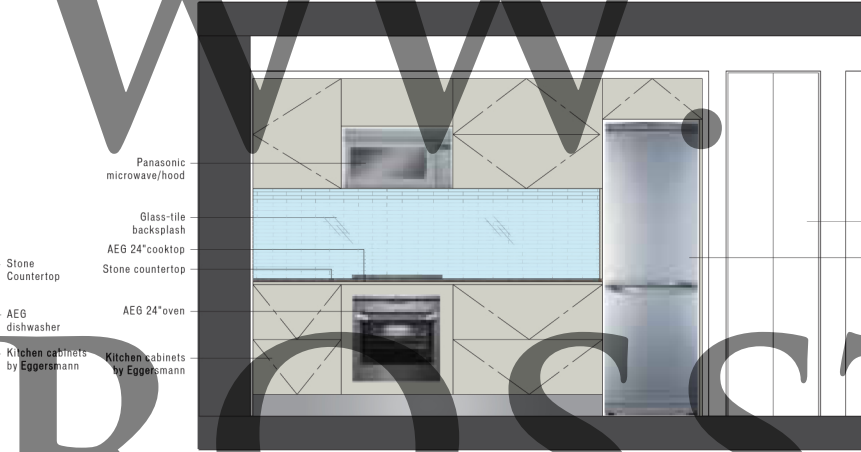
KITCHEN ELEVATIONS SCALE: 1/2" = 1'0"



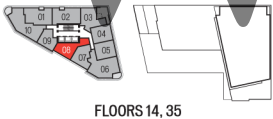
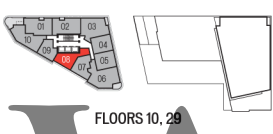
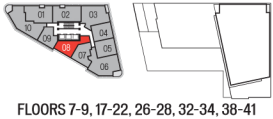
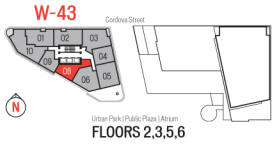
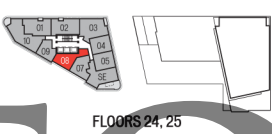
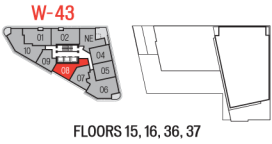
KITCHEN SECTION A



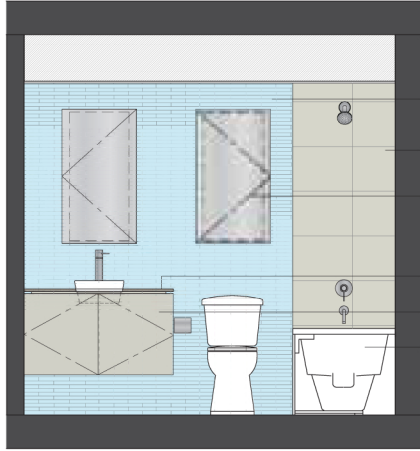
KITCHEN ELEVATION B



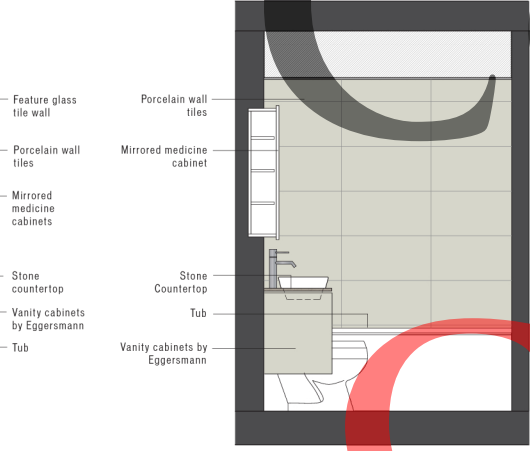
KITCHEN ELEVATION C



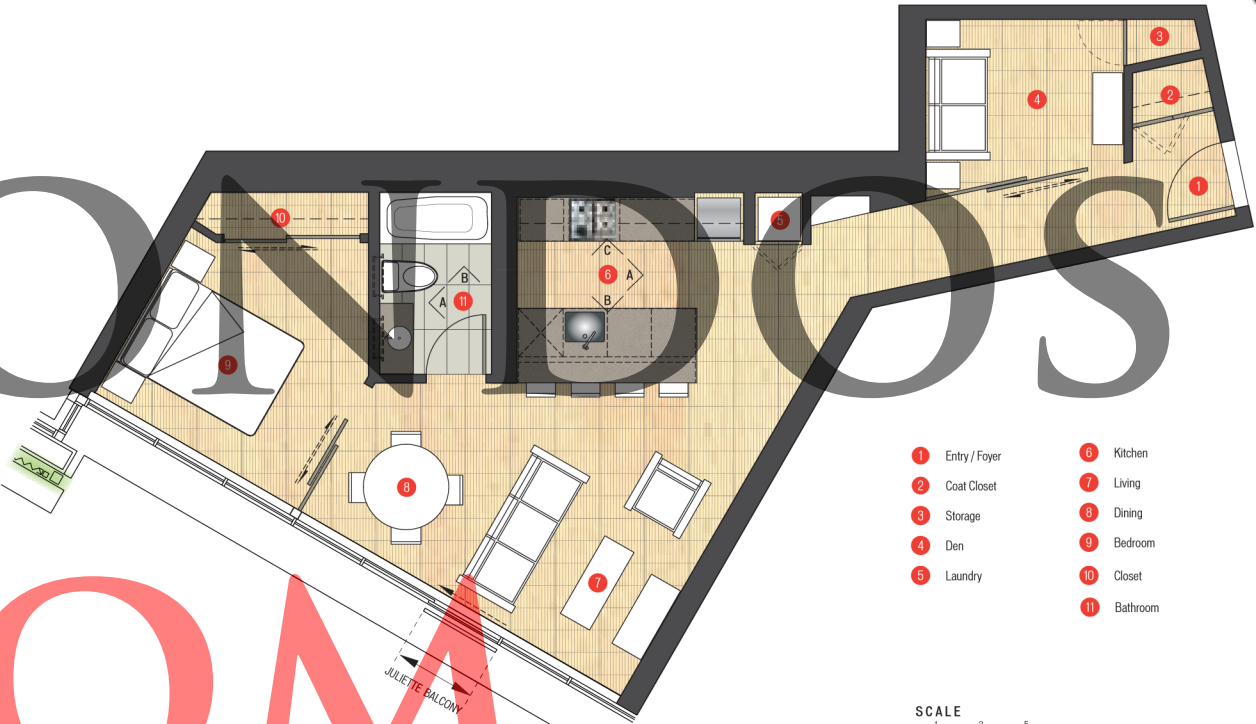
BATHROOM ELEVATIONS SCALE: 1/2" = 1'0"



BATHROOM ELEVATION A



BATHROOM ELEVATION B



- 1 Entry / Foyer
- 2 Coat Closet
- 3 Storage
- 4 Den
- 5 Laundry
- 6 Kitchen
- 7 Living
- 8 Dining
- 9 Bedroom
- 10 Closet
- 11 Bathroom



PLAN
H

TOWER W43

1 BEDROOM + DEN
1 BATH
743 SF LIVING

SPECIFICATIONS:

- Select from 10 custom designs for the suite entry door
- Exposed concrete, over-height ceilings
- Large sliding doors to bedrooms, allowing flex-space options, in most plans
- Tile-patterned oak floors
- Optional integrated work spaces
- Polished stone kitchen countertops
- Full-height glass-tile kitchen backsplash, 5 colours to choose from
- Most master baths include a separate shower and tub
- Dual flush toilet
- Large format porcelain floor and wall tiles in bathrooms
- Ensuite glass-tile feature wall, 5 colours to choose from
- Eggersmann kitchens, custom designed and finished for Woodward's
- Appliance package includes:
 - AEG 24" cooktop (Stainless Steel)
 - AEG 24" oven (Stainless Steel)
 - AEG dishwasher (Stainless Steel)
 - Panasonic microwave/hoodfan (Stainless Steel)
 - LG 24" titanium finish refrigerator
 - Samsung stacked washer/dryer
 - Garburator

DISCLAIMER:

In the interest of continuing improvement, the developer reserves the right to make modifications to the product design, pricing and specifications without notice. Square footages are approximate and may vary. E.&O.E.