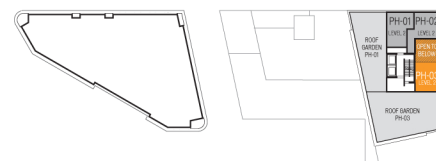
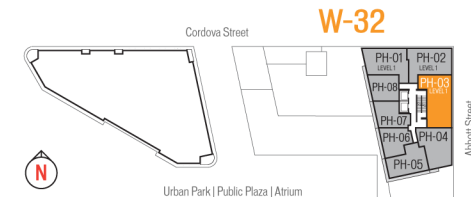


www.



FLOOR 31



FLOOR 30



## PLAN PHC

### TOWER W32

2 BEDROOM + FAMILY  
2.5 BATH

1617 SF LIVING  
2260 SF DECK

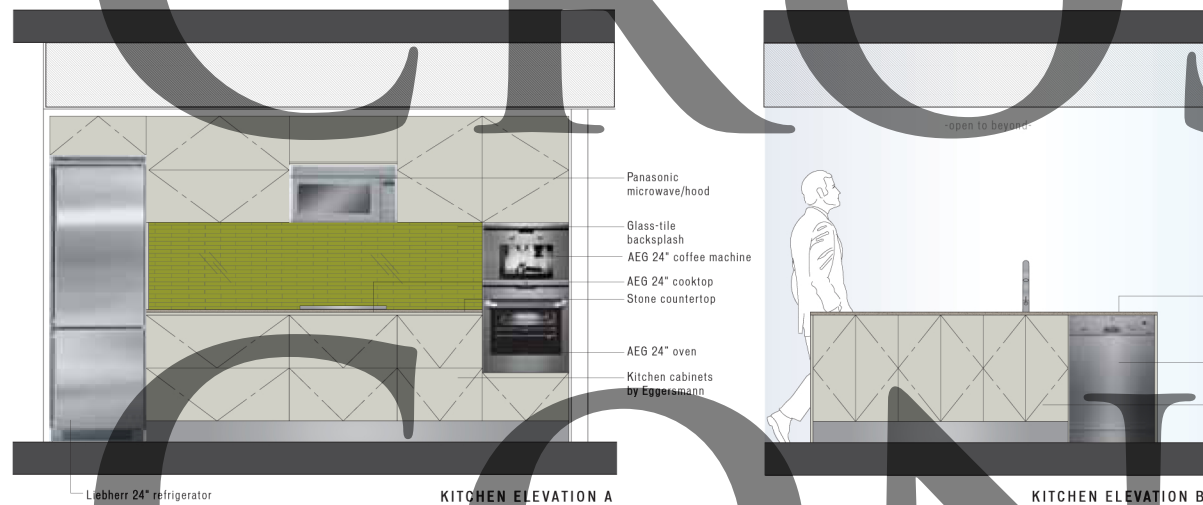
#### SPECIFICATIONS:

- Select from 10 custom designs for the suite entry door
- Exposed concrete, over-height ceilings
- Large sliding doors to bedrooms, allowing flex-space options, in most plans
- Contemporary oak parquet floors
- Optional integrated work spaces
- Polished stone kitchen countertops
- Glass feature wall tiles in a choice of five colours
- Most master baths include a separate shower and tub
- Dual flush toilet
- Large format porcelain floor and wall tiles in bathrooms
- Ensuite glass-tile feature wall, 5 colours to choose from
- Eggersmann kitchens, custom designed and finished for Woodward's
- Air-conditioning
- Appliance package includes:
  - AEG 24" cooktop (Stainless Steel)
  - AEG 24" oven (Stainless Steel)
  - AEG dishwasher (Stainless Steel)
  - AEG built-in coffee machine
  - Panasonic microwave/hoodfan (Stainless Steel)
  - Liebherr 24" refrigerator (Stainless Steel)
  - Samsung stacked washer/dryer
  - Garburator

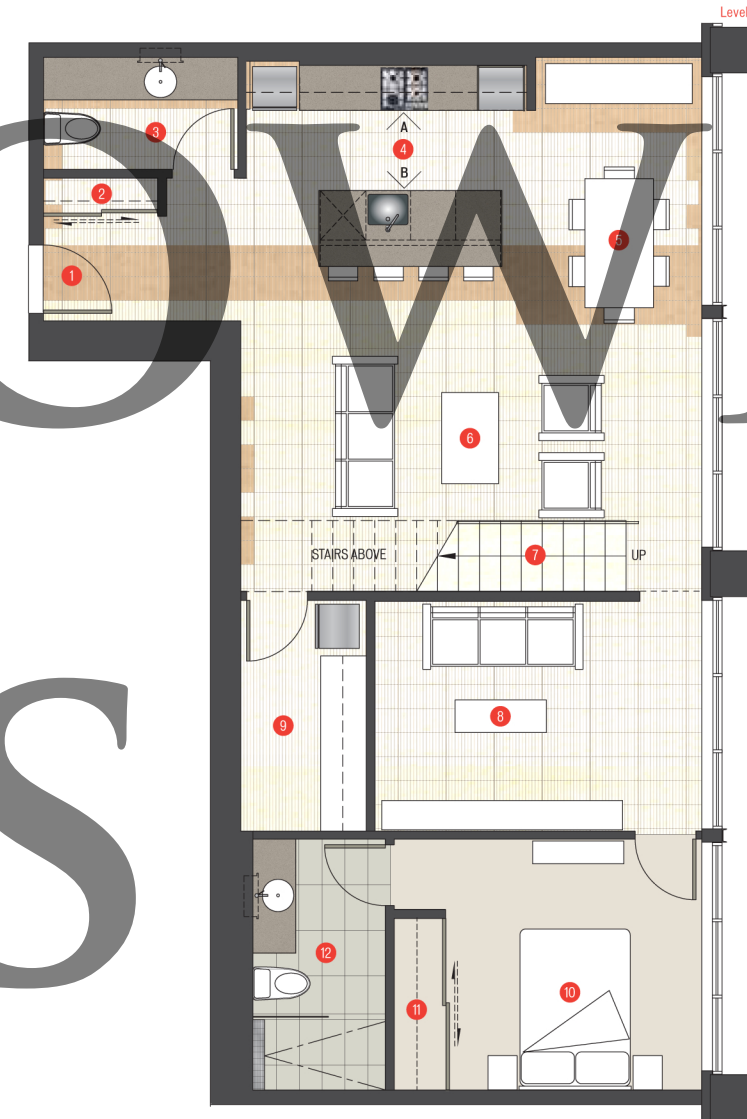
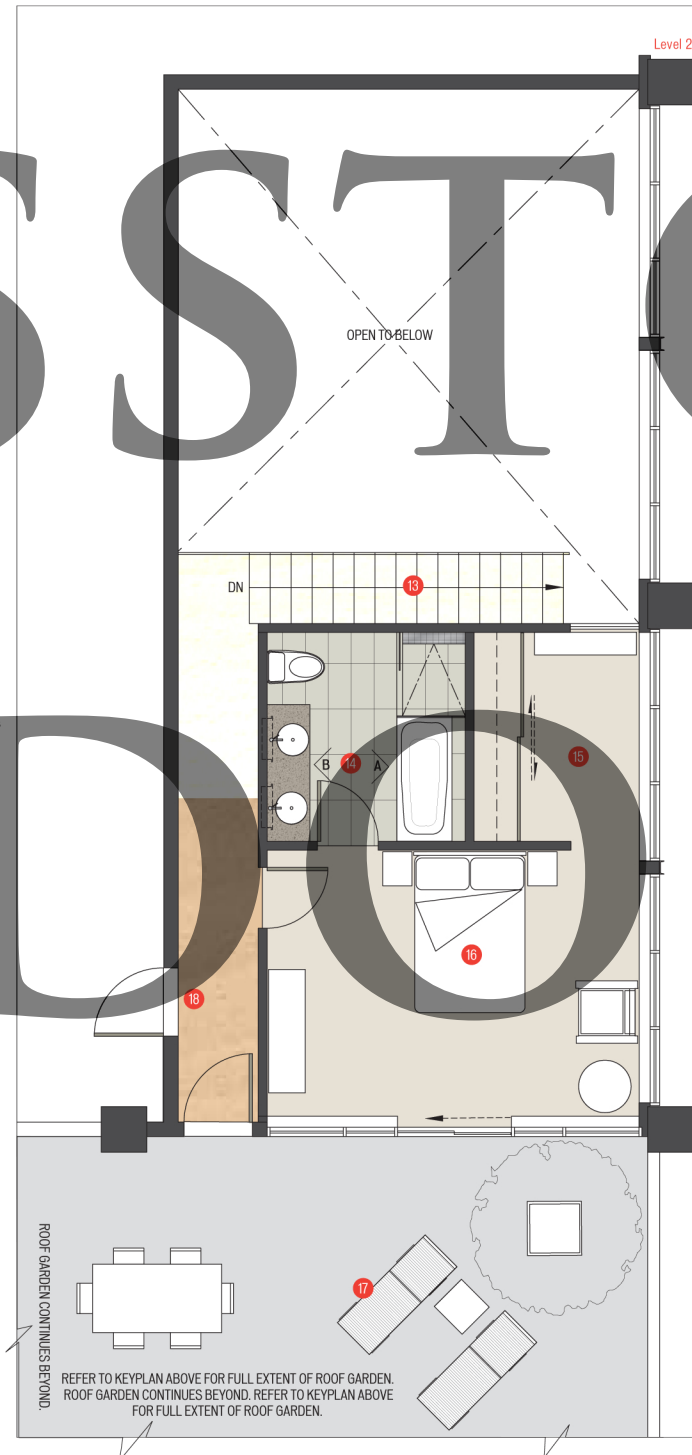
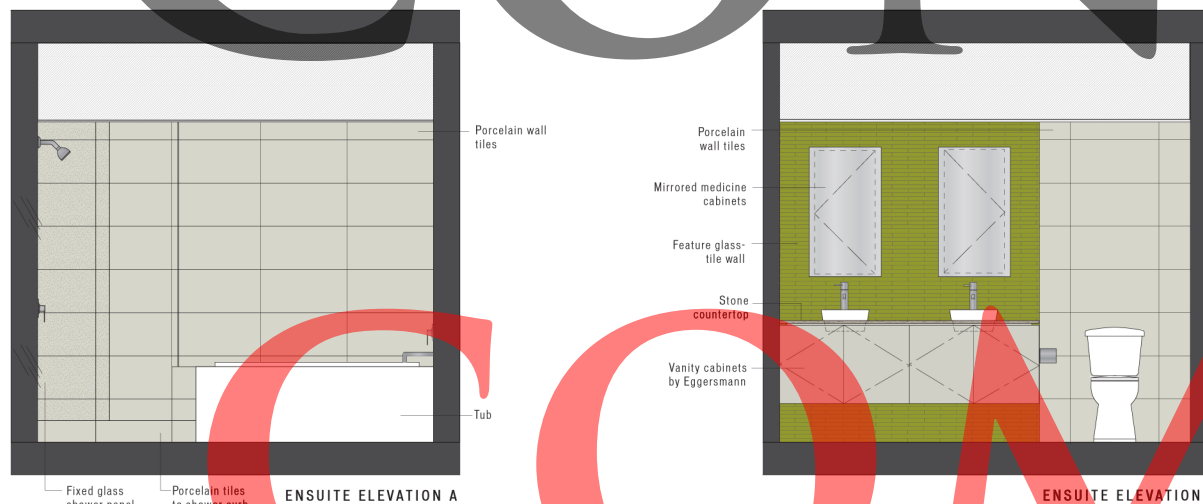
#### DISCLAIMER:

In the interest of continuing improvement, the developer reserves the right to make modifications to the product design, pricing and specifications without notice. Square footages are approximate and may vary. E.&O.E.

#### KITCHEN ELEVATIONS



#### BATHROOM ELEVATIONS



- Level 2
- 13 Stairs
  - 14 Ensuite
  - 15 Walk-in Closet
  - 16 Master Bedroom
  - 17 Roof Garden
  - 18 Exit [FL-31]

- Level 1
- 1 Entry / Foyer [FL-30]
  - 2 Coat Closet
  - 3 Powder Room
  - 4 Kitchen
  - 5 Dining
  - 6 Living
  - 7 Stairs
  - 8 Family
  - 9 Laundry / Storage
  - 10 Bedroom-2
  - 11 Closet
  - 12 Ensuite-2

SCALE  
0 2 4 6 8 10 FT